

MONTHLY CLIMATE SUMMARY, JANUARY 2009
NIU WEATHER SERVICE, DEKALB, IL

Day	Record HI	Record LO	Average HI	Average LO	Obs. HI	Obs. LO	Obs. Avg.	CDD	HDD	GDD	Precip. (in)	Snowfall (in)
1	57	-14	29	16	19	7	13	0	52	0	0	0
2	56	-16	27	12	29	19	24	0	41	0	0	0
3	58	-17	29	14	24	15	19.5	0	45.5	0	0	0
4	55	-22	28	10	35	23	29	0	36	0	0.16	0
5	56	-24	26	9	32	9	20.5	0	44.5	0	0	0
6	49	-19	26	12	28	10	19	0	46	0	0	0
7	55	-20	27	11	29	21	25	0	40	0	0.14	2.1
8	62	-19	24	7	24	7	15.5	0	49.5	0	0.02	0.4
9	53	-14	23	9	20	7	13.5	0	51.5	0	0.06	1.4
10	56	-25	24	8	27	16	21.5	0	43.5	0	0.2	3
11	55	-22	25	9	25	9	17	0	48	0	0.08	1.8
12	56	-19	25	10	18	7	12.5	0	52.5	0	T	T
13	55	-17	28	12	28	8	18	0	47	0	0.08	1.6
14	57	-18	26	11	8	-5	1.5	0	63.5	0	0.12	4.8
15	54	-21	23	9	7	-20	-6.5	0	71.5	0	T	T
16	53	-23*	25	9	-11	-23	-17	0	82	0	0	0
17	56	-19*	27	11	13	-19	-3	0	68	0	T	T
18	54	-25	28	11	23	2	12.5	0	52.5	0	T	T
19	57	-22	27	9	14	3	8.5	0	56.5	0	T	T
20	53	-27	27	10	17	3	10	0	55	0	T	T
21	59	-22	27	13	16	6	11	0	54	0	0	0
22	55	-22	30	16	25	8	16.5	0	48.5	0	0	0
23	57	-25	33	16	30	8	19	0	46	0	0	0
24	63	-23	31	15	26	-4	11	0	54	0	0	0
25	62	-23	29	13	7	-8	-0.5	0	65.5	0	0	0
26	59	-20	27	10	10	1	5.5	0	59.5	0	0	0
27	60	-16	27	10	11	1	6	0	59	0	0	0
28	51	-22	28	11	12	2	7	0	58	0	0.02	0.06
29	55	-17	28	11	23	3	13	0	52	0	0	0
30	50	-22	27	13	28	1	14.5	0	50.5	0	T	T
31	52	-16	28	11	17	2	9.5	0	55.5	0	0	0

*new or tied record temperature

Temperature

1971-2000 AVG. HI: 27.1°F
 1971-2000 AVG. LOW: 11.2°F
 1971-2000 AVG. TEMP: 19.4°F
 January 2009 AVG. HI: 19.81°F
 January 2009 AVG. LO: 3.84°F
 January 2009 AVG. TEMP: 11.82°F

Precipitation

January liquid equivalent TOTAL: 0.88in.
 January liquid equivalent AVG: 1.57 in.
 January SNOW: 15.16 in.
 January SNOW AVG: 9.9 in
 YEAR TO DATE liquid equivalent: 0.88 in.
 YEAR TO DATE liquid equivalent AVG: 1.57 in
 2008-09 SEASONAL SNOW TOTAL: 44.3 in.

Degree Days

COOLING: 1/09: 0.0
 1/09-NOW: 0.0
 HEATING: 1/09: 1648.5
 07/08-NOW: 4478
 GROWING: 1/09: 0
 1/09-NOW: 0

Discussion

January 2009 was much colder than normal. On the 15th, 16th, and 17th, the low temperatures were -20°, -23°, and -19°, respectively; two of those days set new records lows for the day. Each of the average temperatures for January 2009 was colder than the 1971-2000 average temperatures by more than 7°F. Throughout the month, there were six days where the temperature was below zero. It was exceptionally cold on the 16th, when the high for the day only reached -11°F and the low dropped to -23°F.

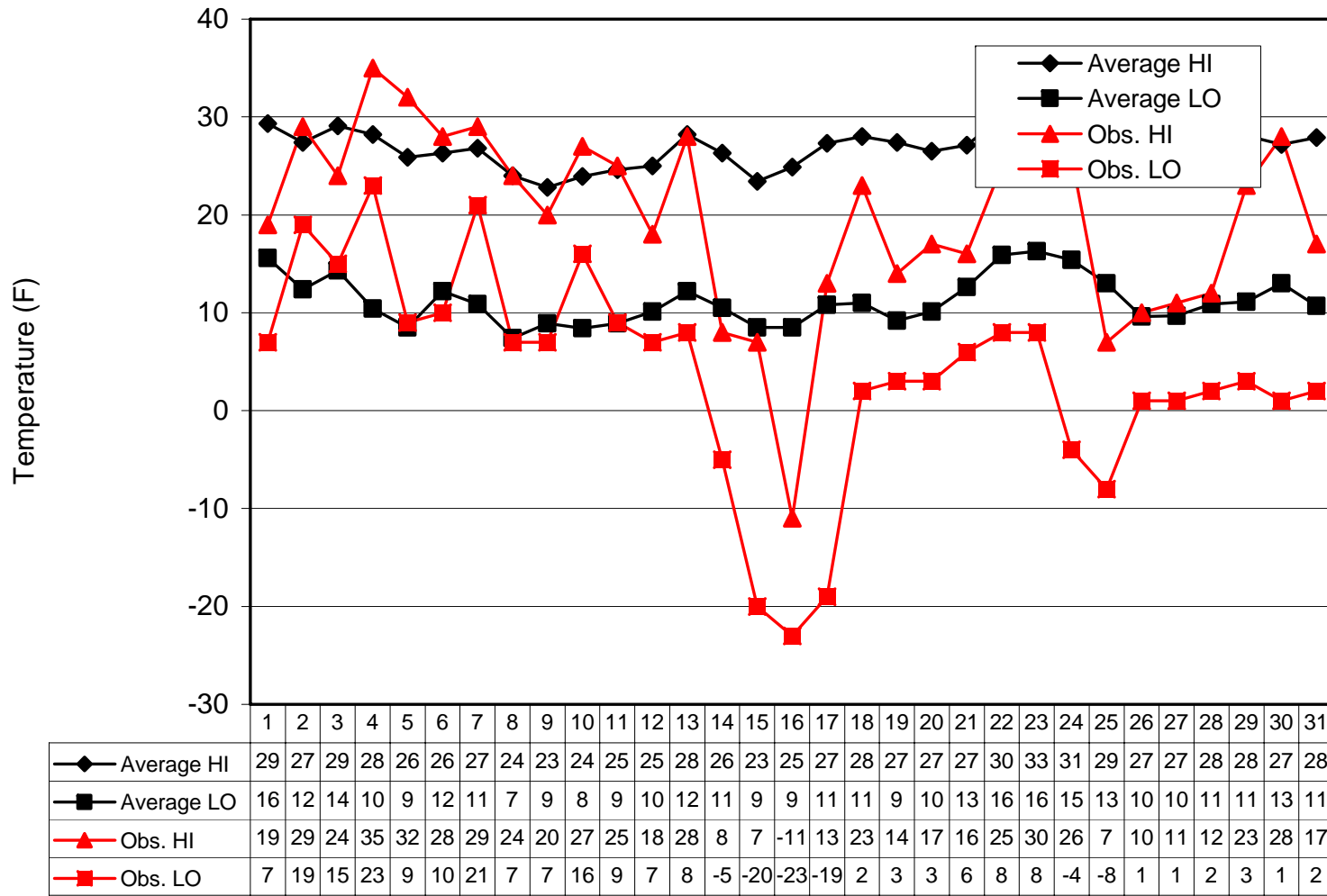
The liquid equivalent total for January 2009 was 0.69" lower than the average January liquid equivalent. The majority of the precipitation fell as snow, and it occurred, for the most part, throughout the first half of the month. The snow total for January 2009 was 15.16" which is 5.26" over the average January snow total. That that brings the 2008-2009 season snow total up to a whopping 44.3".

Erik Janzon, Kyle McAdams, Trevor Edmonson-Cooperative Observers
 Kevin Nasiatka-Weather Director

Forecast Information (updated once daily at approx. 7:30 am): (815) 753- 1623

The Climate Summary is supported by the Department of Geography, the College of Liberal Arts and Sciences, and the Department of Operations

January 2009 Daily Highs and Lows with 1971 - 2000 Average Highs and Lows



Day