

## MONTHLY CLIMATE SUMMARY, MARCH, 2009

### NIU WEATHER SERVICE, DEKALB, IL

Day	Record HI	Record LO	Average				Obs. HI	Obs. LO	Obs. Avg.	CDD	HDD	GDD	Precip. (in)	Snowfall (in)
			HI	Average LO	Obs. HI	Obs. LO								
1	65	-13	39	23	26	13	19.5	0	45.5	0	0	T	T	
2	66	-9	40	22	26	8	17	0	48	0	0	0.00	0.0	
3	72	-5	40	23	23	10	16.5	0	48.5	0	0	0.00	0.0	
4	70	-3	39	24	29	17	23	0	42	0	0	0.00	0.0	
5	71	-7	41	24	44	27	35.5	0	29.5	0	0	0.00	0.0	
6	69	-7	42	25	62	38	50	0	15	0	0	0.00	0.0	
7	70	-7	41	25	61	38	49.5	0	15.5	0	0	0.01	0.0	
8	77	-13	42	23	42	38	40	0	25	0	0	1.72	0.0	
9	73	-3	42	24	44	30	37	0	28	0	0	0.74	0.0	
10	69	-2	42	22	43	29	36	0	29	0	0	0.49	0.0	
11	69	-3	43	25	57	15	36	0	29	0	0	0.02	0.0	
12	72	-6	44	27	28	11	19.5	0	45.5	0	0	0.00	0.0	
13	77	5	44	27	27	11	19	0	46	0	0	0.00	0.0	
14	71	5	46	29	38	16	27	0	38	0	0	0.00	0.0	
15	74	9	46	28	48	24	36	0	29	0	0	0.00	0.0	
16	77	-1	45	27	57	31	44	0	21	0	0	T	0.0	
17	71	-2	44	27	65	42	53.5	0	11.5	3.5	0	0.00	0.0	
18	79	-1	45	27	73	44	58.5	0	6.5	8.5	0	0.00	0.0	
19	78	-8	45	29	54	32	43	0	22	0	0	0.00	0.0	
20	77	2	47	29	48	22	35	0	30	0	0	0.00	0.0	
21	77	4	47	29	45	22	33.5	0	31.5	0	0	T	0.0	
22	78	1	48	28	62	22	42	0	23	0	0	0.00	0.0	
23	80	0	50	28	63	38	50.5	0	14.5	0.5	0	0.01	0.0	
24	84	3	49	29	53	42	47.5	0	17.5	0	0	0.01	0.0	
25	81	3	49	29	64	35	49.5	0	15.5	0	0	1.28	0.0	
26	80	7	50	32	41	34	37.5	0	27.5	0	0	0.00	0.0	
27	82	9	51	32	56	31	43.5	0	21.5	0	0	T	0.0	
28	82	8	53	34	42	28	35	0	30	0	0	0.00	0.0	
29	84	12	52	35	36	27	31.5	0	33.5	0	0	0.45	5.0	
30	84	5	52	33	39	27	33	0	32	0	0	T	T	
31	81	7	55	34	50	29	39.5	0	25.5	0	0	0.27	0.0	

#### Temperature

1971-2000 AVG. HI: 45.5°F  
 1971-2000 AVG. LOW: 27.4 °F  
 1971-2000 AVG. TEMP: 36.7 °F  
 March 2009 AVG. HI: 46.6 °F  
 March 2009 AVG. LO: 26.8 °F  
 March 2009 AVG. TEMP: 36.7 °F

#### Precipitation

March liquid equivalent TOTAL: 5.0 in.  
 March liquid equivalent AVG: 2.44 in.  
 March SNOW: 5.0 in.  
 March AVG SNOW: 4.8 in.  
 liquid equivalent YEAR TO DATE: 8.34 in.  
 liquid equivalent YEAR TO DATE AVG: 5.14 in.  
 2008-09 Seasonal SNOW TO DATE: 54.66 in.  
 2008-09 Seasonal SNOW AVG: 33.9 in.

#### Degree Days

COOLING: 3/09: 0  
 1/09-Now: 0  
 HEATING: 3/09: 876.5  
 7/08-Now: 6466.5  
 GROWING: 3/09: 12.5  
 1/09-Now: 12.5

#### Discussion

March 2009 was an average month in that its average temperature (36.7°F) was exactly the same as the 1971-2000 historic average temperature. There was only one day during March 2009 when the temperature exceeded 70 degrees (March 18, 73°F was the observed high temperature) and only one evening when the low dropped to single digit temperatures (March 2<sup>nd</sup>, observed low of 8°F).

The liquid equivalent total for March 2009 was 5.0", which is over twice the historic average (2.44") for this measure. In fact, the total liquid equivalent observed in March 2009 ranks second among all March months on record for this weather station. The majority of precipitation was rain. Five inches of snowfall was recorded for March 2009, which is in line with the historic average. The precipitation was, for the most part, evenly distributed throughout the month, with most of the snowfall occurring in the last few days.

---

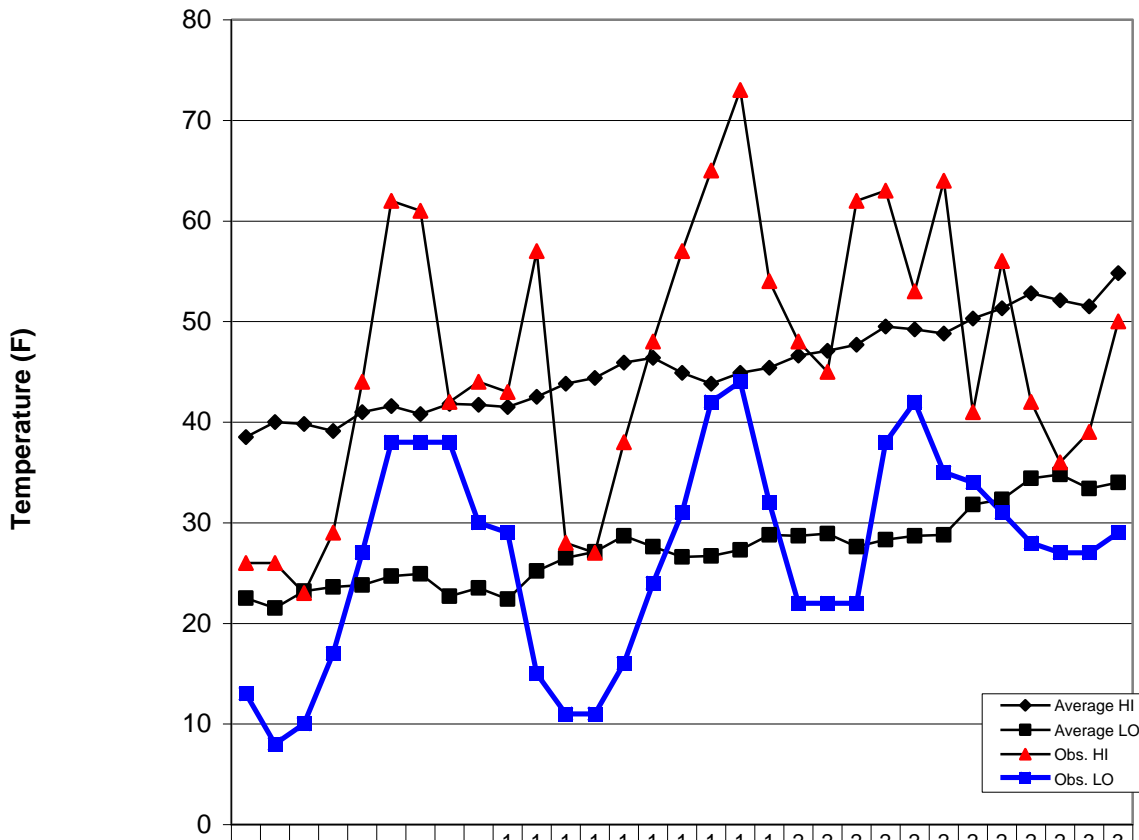
Kyle McAdams, Trevor Edmonson, Marius Paulikas, Erik Janzon, Ian Chang-Cooperative Observers  
 Kevin Nasiatka-Weather Director

Forecast Information (updated once daily at approx. 7:30 am): (815) 753-1623

Website: <http://climate.niu.edu/>

The Climate Summary is supported by the Department of Geography, the College of Liberal Arts and Sciences, and the Department of Operations.

### March 2009 Daily Highs and Lows with 1971-2000 Average Highs and Lows



	1	2	3	4	5	6	7	8	9	10	11	12	13	14	15	16	17	18	19	20	21	22	23	24	25	26	27	28	29	30	31
◆ Average HI	39	40	40	39	41	42	41	42	42	42	43	44	44	46	46	45	44	45	45	47	47	48	50	49	50	51	53	52	52	55	
■ Average LO	23	22	23	24	24	25	25	23	24	22	25	27	27	29	28	27	27	27	29	29	29	28	28	29	29	32	32	34	35	33	34
▲ Obs. HI	26	26	23	29	44	62	61	42	44	43	57	28	27	38	48	57	65	73	54	48	45	62	63	53	64	41	56	42	36	39	50
■ Obs. LO	13	8	10	17	27	38	38	38	30	29	15	11	11	16	24	31	42	44	32	22	22	22	38	42	35	34	31	28	27	27	29

Day