

MONTHLY CLIMATE SUMMARY, NOVEMBER 2010

NIU WEATHER SERVICE: DE KALB, ILL.

Day	Record HI	Record LO	Average		Obs. HI	Obs. LO	Obs. Avg.	CDD	HDD	GDD	Precip. (in)	Snowfall (in)
			HI	Average LO								
1	82	15	57	39	50	31	40.5	0	24.5	0	0	0
2	77	12	57	38	54	33	43.5	0	21.5	0	0	0
3	75	8	53	35	52	31	41.5	0	23.5	0	0	0
4	75	8	50	34	58	36	47	0	18	0	T	0
5	75	1	50	34	49	28	38.5	0	26.5	0	0.01	T
6	74	11	49	32	38	22	30	0	35	0	0	0
7	75	7	48	33	46	26	36	0	29	0	0	0
8	72	6	49	32	60	34	47	0	18	0	0	0
9	76	8	50	32	66	37	51.5	0	13.5	1.5	0	0
10	74	13	49	32	69	41	55	0	10	5	0	0
11	74	8	45	29	69	46	57.5	0	7.5	7.5	0	0
12	72	11	44	28	58	48	53	0	12	3	0.04**	0
13	69	3	44	29	59	47	47	0	18	0	0.03**	0
14	73	2	48	29	52	36	44	0	21	0	0.06	T
15	70	2	46	30	52	30	41	0	24	0	0.05	0
16	73	-2	46	29	50	32	41	0	24	0	0.04	0
17	72	-2	47	30	53	34	43.5	0	21.5	0	0	0
18	71	5	48	31	43	31	37	0	28	0	T	0
19	73	6	48	33	39	26	32.5	0	32.5	0	0	0
20	67	3	47	29	50	27	38.5	0	26.5	0	0	0
21	72	2	43	27	42	30	36	0	29	0	T	0
22	68	0	41	24	57	42	49.5	0	15.5	0	0.05	0
23	67*	-2	43	27	67*	23	57	0	8	7	0.24	0
24	64	-5	42	26	31	23	27	0	38	0	0	0
25	64	-6	41	25	37	28	32.5	0	32.5	0	0.07	T
26	65	-4	43	27	36	16	26	0	39	0	T	0
27	65	-2	41	28	32	16	24	0	41	0	0	0
28	66	-6	40	24	34	18	26	0	39	0	0	0
29	64	-3	38	22	44	23	33.5	0	31.5	0	0	0
30	65	-9	39	25	46	31	38.5	0	26.5	0	0.47	0

*A NEW RECORD HIGH was recorded on the 23rd; the previous record was 66, which was set in 1908 at the former Sycamore site.

**SPECIAL NOTE: Readers of this summary who follow the daily Co-operative Weather Station observation reports released by the National Weather Service office in Romeoville may have noticed that the precipitation observations for the 12th and 13th originally were, respectively, 0.35 in. and 0.25 in. These observations were later corrected to 0.04 in. and 0.03 in., respectively, due to an observer's data entry error that resulted in figures in error by an order of magnitude.

Temperature

1971-2000 AVG. HI: 46.3(F)
 1971-2000 AVG. LOW: 29.7(F)
 1971-2000 AVG. TEMP: 38.0(F)
 November 2010 AVG. HI: 49.8(F)
 November 2010 AVG. LO: 30.9(F)
 November 2010 AVG. TEMP: 40.4(F)

Precipitation

November 2010 TOTAL: 1.06 in.
 November AVG: 2.82 in.
 November 2010 SNOW: T
 November SNOW AVG: 2.2 in.
 2010 liquid-eq. YEAR TO DATE: 33.46 in.
 liquid-eq. YEAR TO DATE AVG: 35.22 in.
 2010-11 Seasonal SNOW TO DATE: T
 Seasonal SNOW TO DATE AVG: 2.4 in.

Degree Days

COOLING: 11/10: 0
 1/10-Now: 965
 HEATING: 11/10: 734.5
 7/10-Now: 1182.5
 GROWING: 11/10: 24
 1/10-Now: 3350.5

Discussion

November 2010 temperatures were warmer than the historical (30-year, 1971-2000) averages. The mean temperature of 40.4 degrees was 2.4 degrees above the historical average. The first week of the month featured near to or slightly below average followed by a period of relative warmth between the 8th and the 13th. Temperatures between the 14th and 21st were generally within approximately five degrees either side of the daily historical averages before a record high was recorded on the 23rd. Cooler temperatures prevailed, thereafter, for the remainder of the month.

Monthly liquid-equivalent precipitation totaled 1.06 in. and was only 38 percent of the historical average total of 2.82 in. Precipitation amounts lacked even temporal distribution, as nearly half it was recorded on the month's last day. In fact, the 23 November U.S. Drought Monitor product (a long-term drought condition proxy: <http://drought.unl.edu/dm/monitor.html>) highlighted much of northern Illinois east of the US-51 corridor (including the local area) as having "abnormally dry" conditions. Snowfall for November totaled a trace. The trace snowfall total accounts for three trace observations: one on the 5th to account for graupel the afternoon before, another (the first bona-fide trace of snowfall of the 2010-11 snow season) on the 14th to account for a brief period of flurries observed in the late evening before, and still another on the 25th to account for a period of sleet and some snow the midday before.

Fall 2010 featured a mean temperature of 53.0 degrees, which was 1.6 degrees above the historical average of 51.4 degrees and tied with 1913, 1947, and 1982 as the 25th warmest (at the 78th percentile) on record since 1896. Liquid-equivalent precipitation totaled 4.84 in., which was 54 percent of the historical average of 8.89 in. and ranked as the 19th driest (at the 17th percentile) on record since 1896. Frozen precipitation, including snowfall, totaled a trace.

Adam Dawson, Victoria Hordosi, Chris Lippold, Robert Niesen, Jessica Troike, and Adam Turchioe—Cooperative Observers; Daniel J. Brouillette and Alecia Osborne—Co-Weather Directors

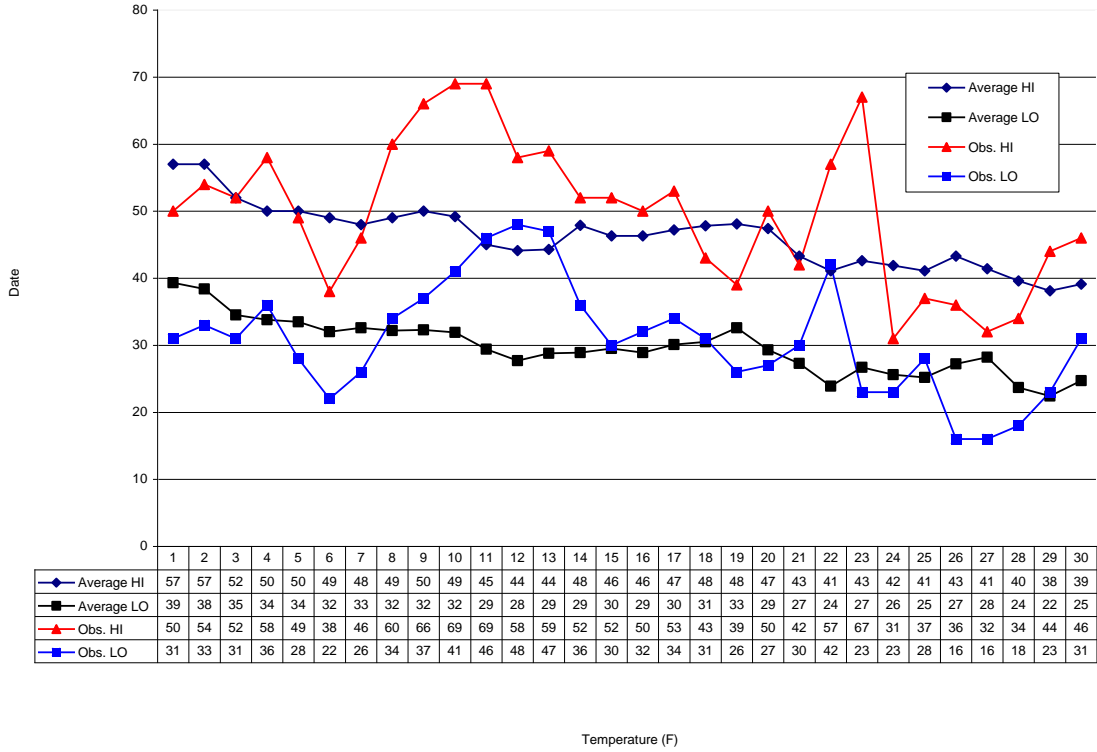
Special thanks are given to Robert Niesen for performing the 0700 daily observations during NIU's Thanksgiving recess.

This summary was prepared by Daniel J. Brouillette, 30 November 2010. Forecast information (updated once daily at approx. 7:30 am): (815) 753-1623.

Climate Website: <http://climate.niu.edu>

The Climate Summary is supported by the Department of Geography, the College of Liberal Arts and Sciences, and the Department of Operations.

November 2010 Daily Highs and Lows with 1971-2000 Average Highs and Lows
 Prepared by Daniel J. Brouillette, Co-Weather Dir.



Temperature (F)

