

MONTHLY CLIMATE SUMMARY, JANUARY 2011

NIU WEATHER SERVICE: DE KALB, ILL.

Day	Record HI	Record LO	Average HI	Average LO	Obs. HI	Obs. LO	Obs. Avg.	CDD	HDD	GDD	Precip. (in)	Snowfall (in)
1	57	-14	31	16	49	20	34.5	0	30.5	0	0.2	0
2	56	-16	29	15	20	11	15.5	0	49.5	0	0	0
3	58	-17	31	15	26	11	18.5	0	46.5	0	0	0
4	55	-22	31	15	34	17	25.5	0	39.5	0	0	0
5	56	-24	30	14	21	8	14.5	0	50.5	0	T	T
6	49	-19	29	15	31	11	21	0	44	0	T	T
7	55	-20	28	14	27	14	20.5	0	44.5	0	T	T
8	62	-19	28	12	21	7	14	0	51	0	0.02	0.2
9	53	-14	28	13	22	5	13.5	0	51.5	0	0	0
10	56	-25	26	12	27	5	16	0	49	0	0	0
11	55	-22	27	13	31	15	23	0	42	0	0.05	0.8
12	56	-19	29	17	25	14	19.5	0	45.5	0	0.03	1
13	55	-17	33	16	25	14	19.5	0	45.5	0	T	T
14	57	-18	27	14	19	13	16	0	49	0	T	T
15	54	-21	25	11	23	16	19.5	0	45.5	0	0.01	0.2
16	53	-23	24	10	22	5	13.5	0	51.5	0	0	0
17	56	-20	26	11	19	5	12	0	53	0	T	T
18	54	-25	27	9	32	19	25.5	0	39.5	0	0.44	3.2
19	57	-22	26	6	27	14	20.5	0	44.5	0	T	T
20	53	-27	25	9	19	11	15	0	50	0	T	T
21	59	-22	25	11	16	-11	2.5	0	62.5	0	0	0
22	55	-22	29	15	9	-11	-1	0	66	0	0.02	0.7
23	57	-25	31	15	15	-4	5.5	0	59.5	0	T	T
24	63	-23	28	13	18	-3	7.5	0	57.5	0	0.03	0.3
25	62	-23	25	10	24	17	20.5	0	44.5	0	T	T
26	59	-20	26	10	28	19	23.5	0	41.5	0	0	0
27	60	-16	29	11	22	16	19	0	46	0	T	T
28	51	-22	30	12	24	12	18	0	47	0	0.05	1
29	55	-17	29	13	29	16	22.5	0	42.5	0	T	T
30	50	-22	29	14	33	26	29.5	0	35.5	0	T	T
31	52	-16	28	12	28	21	24.5	0	40.5	0	0	0

SPECIAL NOTE: Effective with this summary, 1981-2010 30-year climate normals (or "historical averages") are referenced rather than 1971-2000 30-year climate normals as previously. The only exception is the "Seasonal Snow to Date Average" since it is only midway through the July-June snow year.

Temperature

1981-2010 AVG. HI: 29.3 °F
 1981-2010 AVG. LOW: 12.7°F
 1981-2010 AVG. TEMP: 20.3°F
 January 2011 AVG. HI: 24.7°F
 January 2011 AVG. LO: 10.7°F
 January 2011 AVG. TEMP: 17.7°F

Precipitation

January 2011 TOTAL: 0.85 in.
 January AVG: 1.47 in.
 January 2011 SNOW: 7.4 in.
 January SNOW AVG: 9.7 in.
 2011 liquid-eq. YEAR TO DATE: 0.85 in.
 liquid-eq. YEAR TO DATE AVG: 1.47 in.
 2010-11 Seasonal SNOW TO DATE: 25.0 in.
 Seasonal SNOW TO DATE AVG.: 21.7 in.

Degree Days

COOLING: 1/11: 0
 1/11-NOW: 0
 HEATING: 1/11: 1465.5
 7/10-NOW: 4131
 GROWING: 1/11: 0
 1/11-NOW: 0

Discussion

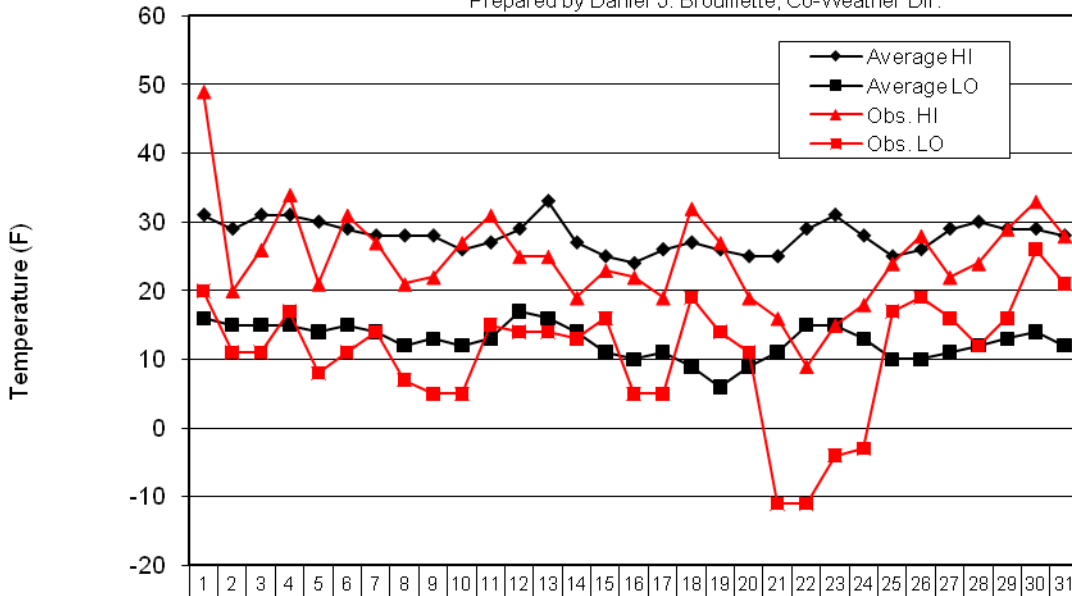
January 2011 temperatures were consistently below historical (30-year, 1981-2010) averages. As a result, the mean temperature of 17.7 degrees was 2.6 degrees below the historical average of 20.3 degrees. The negative anomalies were most pronounced in daily high temperatures (which averaged 4.6 degrees below the historical average) compared to daily low temperatures (2.0 degrees below) due to more cloudiness than typical. Temperatures were consistently but moderately cold, reaching above the freezing mark of 32 degrees only for brief periods around midnight on the 1st and in the afternoons of the 3rd and 29th, and generally not bitterly cold, with sub-zero temperatures recorded only on the mornings of the 21st through 24th.

Monthly liquid-equivalent precipitation totaled 0.85 in., only 58 percent of the historical average total of 1.47 in. The monthly snowfall total of 7.4 in. was slightly below the historical average of 9.7 in. The 2010-2011 seasonal total of 25.0 in. is currently 115 percent of the historical (30-year, 1971-2000) average total of 21.7 in. Precipitation this month was subdued due to the prevalence of northwest flow at 500 hPa and attendant "Alberta Clipper"-type shortwave troughs of low pressure. Indeed, half of both the snowfall and liquid-equivalent totals were recorded on the 18th following a somewhat stronger shortwave trough that brought snow and then freezing rain and sleet during the preceding afternoon and night.

Chris Lippold, Dan Neirman, Rob Niesen, and Laura Schutte—Cooperative Observers; Daniel J. Brouillette and Alecia Osborn—Co-Weather Directors
 This summary was prepared by Daniel J. Brouillette, 31 January 2011. Forecast Information (updated once daily at approx. 7:30 am): (815) 753-1623
 Climate Website: <http://climate.niu.edu>

The Climate Summary is supported by the Department of Geography, the College of Liberal Arts and Sciences, and the Department of Operations.

January 2011 Daily Highs and Lows with 1971 - 2000 Average Highs and Lows
 Prepared by Daniel J. Brouillette, Co-Weather Dir.



	1	2	3	4	5	6	7	8	9	10	11	12	13	14	15	16	17	18	19	20	21	22	23	24	25	26	27	28	29	30	31
◆ Average HI	31	29	31	31	30	29	28	28	28	26	27	29	33	27	25	24	26	27	26	25	25	29	31	28	25	26	29	30	29	29	28
■ Average LO	16	15	15	15	14	15	14	12	13	12	13	17	16	14	11	10	11	9	6	9	11	15	15	13	10	10	11	12	13	14	12
▲ Obs. HI	49	20	26	34	21	31	27	21	22	27	31	25	25	19	23	22	19	32	27	19	16	9	15	18	24	28	22	24	29	33	28
■ Obs. LO	20	11	11	17	8	11	14	7	5	5	15	14	14	13	16	5	5	19	14	11	-11	-11	-4	-3	17	19	16	12	16	26	21

Day