

MONTHLY CLIMATE SUMMARY, FEBRUARY 2012
NIU WEATHER SERVICE: DE KALB, ILL.

Day	Record HI	Record LO	Average HI	Average LO	Obs. HI	Obs. LO	Obs. Avg.	CDD	GDD	HDD	Precip. (in)	Snowfall (in)
1	65	-18	32	15	55	33	44	0	0	21	0	0
2	47	-20	31	16	40	27	33.5	0	0	31.5	0	0
3	52	-23	30	16	37	27	32	0	0	33	0	0
4	54	-18	29	13	37	29	33	0	0	32	T	0
5	58	-20	27	11	41	27	34	0	0	31	0	0
6	55	-15	28	14	38	27	32.5	0	0	32.5	0	0
7	52	-16	30	14	30	27	28.5	0	0	36.5	0	0
8	56	-16	30	14	32	23	27.5	0	0	37.5	T	T
9	59	-26	31	15	33	17	25	0	0	40	0	0
10	55	-21	31	15	33	18	25.5	0	0	39.5	0	0
11	60	-15	30	15	33	7	20	0	0	45	0.03	0.5
12	55	-21	31	13	20	6	13	0	0	52	0	0
13	59	-26	31	14	35	12	23.5	0	0	41.5	0	0
14	60	-12	32	16	34	20	27	0	0	38	0.05	0.6
15	64	-17	34	17	34	27	30.5	0	0	34.5	T	T
16	56	-14	32	17	39	30	34.5	0	0	30.5	0.25	0
17	57	-16	33	17	44	24	34	0	0	31	0	0
18	56	-21	34	19	48	25	36.5	0	0	28.5	0	0
19	66	-17	37	19	36	22	29	0	0	36	0	0
20	62	-25	38	23	38	21	29.5	0	0	35.5	0	0
21	65	-11	39	23	41	23	32	0	0	33	0.09	0.6
22	64	-13	38	23	42	30	36	0	0	29	0.01	0.1
23	69	-12	37	22	42	28	35	0	0	30	0.02	0
24	62	-11	37	21	35	28	31.5	0	0	33.5	0.7	4.2
25	66	-12	36	20	32	13	22.5	0	0	42.5	0.01	T
26	69	-11	37	20	24	13	18.5	0	0	46.5	0	0
27	68	-6	38	21	48	21	34.5	0	0	30.5	0	0
28	63	-5	37	21	34	22	28	0	0	37	0	0
29	59	-13	41	20	48	26	37	0	0	28	0.44	0

Temperature

1981-2010 AVG. HI: 33.2 (F)
 1981-2010 AVG. LOW: 17.2 (F)
 1981-2010 AVG. TEMP: 25.2 (F)
 February 2012 AVG. HI: 37.3 (F)
 February 2012 AVG. LO: 22.5 (F)
 February 2012 AVG. TEMP: 29.9 (F)

Precipitation

February 2012 TOTAL: 1.60 in.
 February AVG: 1.55 in.
 February 2012 SNOW: 6.0 in.
 February SNOW AVG: 7.3 in.
 2012 liquid-eq. YEAR TO DATE: 3.01 in.
 liquid-eq. YEAR TO DATE AVG: 3.02 in.
 2011-12 Seasonal SNOW TO DATE: 19.7 in.
 Seasonal SNOW TO DATE AVG: 27.2 in.

Degree Days

COOLING: 2/12: 0
 1/12-NOW: 0
 HEATING: 2/12: 1017
 7/11-NOW: 4569
 GROWING: 2/12: 0
 1/12-NOW: 0

Discussion

February 2012 featured temperatures well above the historical (30-year, 1981-2010) averages. The monthly mean temperature of 29.9 degrees was some 4.7 degrees above the historical-average value of 25.2 degrees. The monthly mean low and high temperatures were 22.5 degrees and 37.3 degrees, respectively, which yielded positive anomalies with respect to historical-average values of 5.3 degrees and 4.1 degrees, respectively. Temperatures were fairly consistently above the historical averages, with brief interludes of colder temperatures between the 10th and 12th and again, to some extent, between the 24th and 26th.

This February featured a liquid-equivalent precipitation total near the historical average. The liquid-equivalent total of 1.60 in. was some 102 percent of the historical-average value of 1.55 in. Snowfall was below the historical average, totaling 6.0 in., some 82 percent of the historical-average value of 7.3 in. Most of this snowfall came early on the morning of the 24th, when a "Saskatchewan Screamer" shortwave trough affected the Midwest.

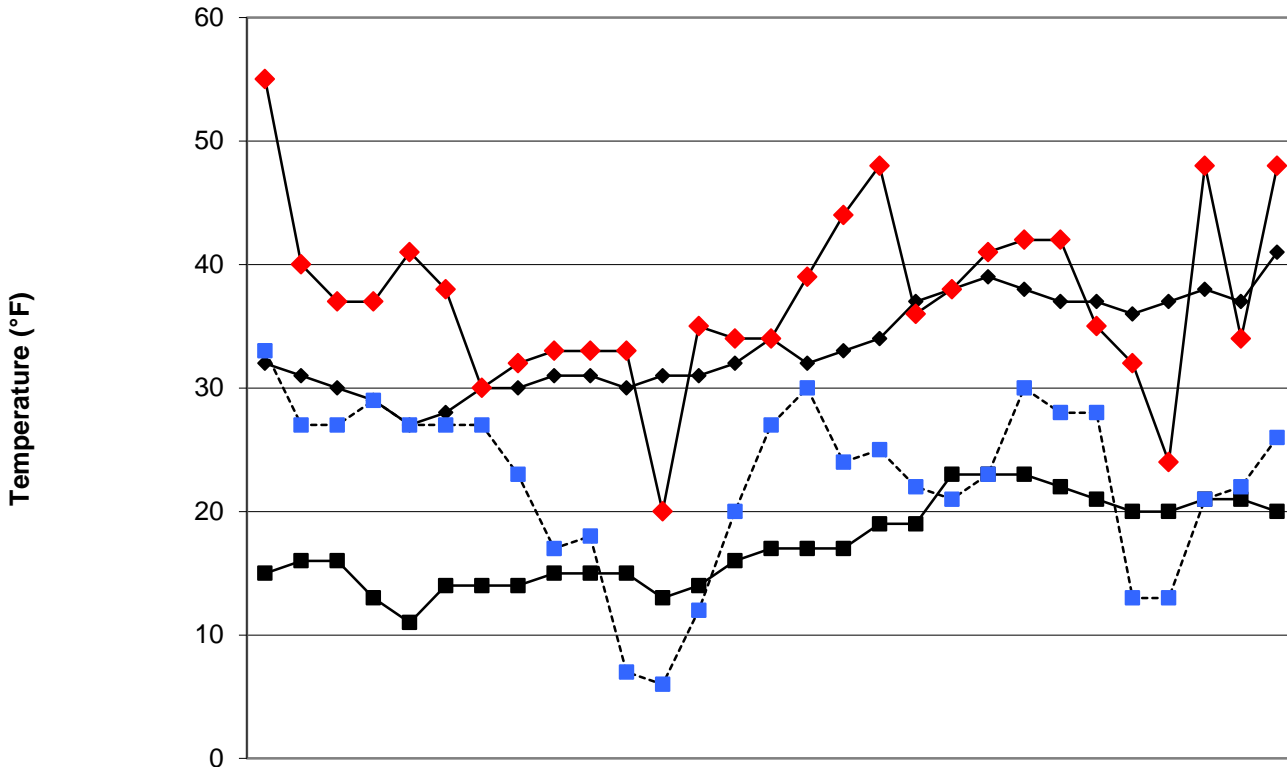
Winter 2011-2012 began on 1 December 2011 and ended on 29 February. The mean temperature for this period was 29.1 degrees, which was the seventh warmest on record since records began in 1896. Liquid-equivalent precipitation was somewhat above normal, totaling 4.55 in., which ranked 29th wettest since 1896. Interestingly, snowfall totaled 19.7 in., which ranked 35th snowiest on record since 1896.

John Barmann, Raitis Bocka, Justin Clay, Doug Dziubla, Nick Gray, Bryan Hartzell, Tim Herman, & Rob Niesen—Cooperative Observers; Daniel J. Brouillette--Weather Director
 This summary was prepared by Daniel J. Brouillette, 29 February 2012. Forecast Information (updated once daily at approx. 7:30 am): (815) 753-1623

Climate Website: <http://climate.niu.edu>

The Climate Summary is supported by the Department of Geography, the College of Liberal Arts and Sciences, and the Department of Operations.

February 2012 Daily Highs and Lows with 1981-2010 Average Highs and Lows
 Prepared by Daniel J. Brouillette, NIU Weather Director



	1	2	3	4	5	6	7	8	9	10	11	12	13	14	15	16	17	18	19	20	21	22	23	24	25	26	27	28	29
—◆— Average HI	32	31	30	29	27	28	30	30	31	31	30	31	31	32	34	32	33	34	37	38	39	38	37	37	36	37	38	37	41
—■— Average LO	15	16	16	13	11	14	14	14	15	15	15	13	14	16	17	17	17	19	19	23	23	23	22	21	20	20	21	21	20
—◆— Obs. HI	55	40	37	37	41	38	30	32	33	33	33	20	35	34	34	39	44	48	36	38	41	42	42	35	32	24	48	34	48
- - -■- - - Obs. LO	33	27	27	29	27	27	27	23	17	18	7	6	12	20	27	30	24	25	22	21	23	30	28	28	13	13	21	22	26