

MONTHLY CLIMATE SUMMARY, NOVEMBER 2013

NIU WEATHER SERVICE: DE KALB, ILL.

Day	Record HI	Record LO	Average HI	Average LO	Obs. HI	Obs. LO	Obs. Avg.	GDD	CDD	HDD	Precip. (in)	Snowfall (in)
1	82	15	56	38	62	40	51	1	0	14	1.75	0
2	77	12	54	37	46	34	40	0	0	25	0.03	0
3	75	8	52	33	46	31	38.5	0	0	26.5	T	0
4	75	8	52	34	51	34	42.5	0	0	22.5	0	0
5	75	1	51	33	55	41	48	0	0	17	0	0
6	74	11	48	31	55	48	51.5	1.5	0	13.5	0.63	0
7	75	7	49	32	55	26	40.5	0	0	24.5	0.18	0
8	72	6	51	32	40	25	32.5	0	0	32.5	0	0
9	76	8	51	32	47	25	36	0	0	29	0	0
10	74	13	51	33	57	31	44	0	0	21	0	0
11	74	8	48	30	48	31	39.5	0	0	25.5	0	0
12	72	11	45	29	45	17	31	0	0	34	0.07	0.3
13	69	3	47	29	32	18	25	0	0	40	0	0
14	73	2	49	31	40	19	29.5	0	0	35.5	0	0
15	70	2	47	32	48	27	37.5	0	0	27.5	0	0
16	73	-2	45	31	50	34	42	0	0	23	T	0
17	72	-2	45	30	61	43	52	2	0	13	0.54	0
18	71	5	46	30	65	33	49	0	0	16	0.48	0
19	73	6	47	32	41	23	32	0	0	33	0	0
20	67	3	48	29	40	23	31.5	0	0	33.5	0	0
21	72	2	44	28	41	29	35	0	0	30	0.11	0
22	68	0	42	26	45	33	39	0	0	26	0.01	0
23	67	-2	45	27	35	20	27.5	0	0	37.5	0	0
24	64	-5	44	26	21	8	14.5	0	0	50.5	0	0
25	64	-6	41	25	25	13	19	0	0	46	0	0
26	65	-4	44	27	30	24	27	0	0	38	0.01	0.5
27	65	-2	44	29	31	8	19.5	0	0	45.5	0.02	0.5
28	66	-6	43	27	25	9	17	0	0	48	0	0
29	64	-3	41	26	31	13	22	0	0	43	0	0
30	65	-9	40	27	33	14	23.5	0	0	41.5	0	0

Temperature

1981-2010 AVG. HI: 46.9(F)
 1981-2010 AVG. LOW: 30.1(F)
 1981-2010 AVG. TEMP.: 38.5(F)
 November 2013 AVG. HI: 43.4(F)
 November 2013 AVG. LO: 25.8(F)
 November 2013 AVG. TEMP.: 34.6(F)

Precipitation

November 2013 TOTAL: 3.83 in.
 November AVG.: 2.68 in.
 November 2013 SNOW: 1.3 in.
 November SNOW AVG: 1.1 in.
 2013 liquid-eq. YEAR TO DATE: 39.87 in.
 liquid-eq. YEAR TO DATE AVG.: 35.51 in.
 2012-13 Seasonal SNOW TO DATE: 1.3 in.
 Seasonal SNOW TO DATE AVG.: 1.2 in.

Degree Days

COOLING: 11/13: 0
 1/13-Now: 729.5
 HEATING: 11/13: 912.5
 7/13-Now: 1468.5
 GROWING: 11/13: 4.5
 1/13-Now: 2833

Discussion

November's mean temperature of 34.6°F was almost four degrees cooler than the historical average. November featured mostly below average temperatures with only twelve days at or above average highs and ten at or above average lows. Most of November included high temperatures that were in the 40's, with the highest temperature recorded on November 18th at 65°F. The lowest temperature for November was recorded on the 24th and 27th at 8°F. Liquid Equivalent precipitation total for the month of November was 3.83 in. This was 1.15 inches more than the historical mean, with 1.75", some 45.7% of the month's total, falling on the first of the month. The year-to-date liquid equivalent now stands at 39.87 in., which is 4.36 inches above the year-to-date mean. November also had the first measurable snowfall totals with 1.3 in. falling over the 12th, 26th, and 27th. This is 0.2 inches above the monthly average and 0.1 inches above the seasonal snow-to-date average.

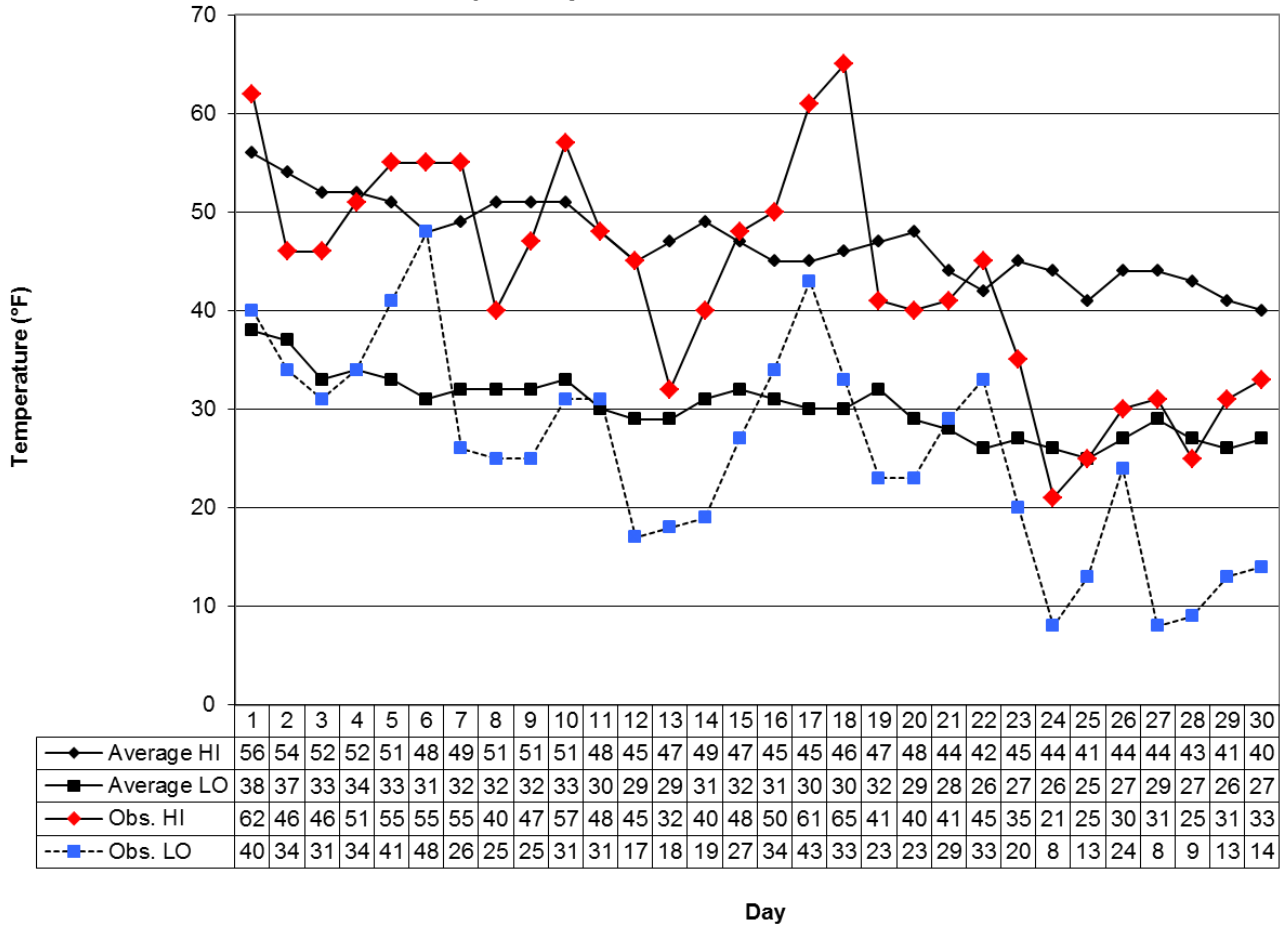
Richard Medicott, Meghan Heman, Brigitte Lim, Rebecca Marra, Jodi Wright, Shannon Bordon, Stephanie Gizzi, Melissa Randich, Jason Madden, Joe Rodey, Kevin Hollon, Vanessa Murray —Cooperative Observers
 Richard Medicott—Weather Director

This summary was prepared by Richard Medicott, 18 December 2018. Forecast information (updated once daily at approx. 7:30 am): (847) 848-4082.

Climate Website: <http://climate.niu.edu>

The Climate Summary is supported by the Department of Geography, the College of Liberal Arts and Sciences, and the Department of Operations.

November 2013 Daily Highs and Lows with 1981-2010 Average Highs and Lows
 Prepared by Richard C. Medicott, NIU Weather Director



—◆— Average HI	56	54	52	52	51	48	49	51	51	51	48	45	47	49	47	45	45	46	47	48	44	42	45	44	41	44	44	43	41	40
—■— Average LO	38	37	33	34	33	31	32	32	32	33	30	29	29	31	32	31	30	30	32	29	28	26	27	26	25	27	29	27	26	27
—◆— Obs. HI	62	46	46	51	55	55	55	40	47	57	48	45	32	40	48	50	61	65	41	40	41	45	35	21	25	30	31	25	31	33
- - ■ - - Obs. LO	40	34	31	34	41	48	26	25	25	31	31	17	18	19	27	34	43	33	23	23	29	33	20	8	13	24	8	9	13	14

Day