

MONTHLY CLIMATE SUMMARY, JANUARY 2014

NIU WEATHER SERVICE: DE KALB, ILL.

Day	Record HI	Record LO	Average HI	Average LO	Obs. HI	Obs. LO	Obs. Avg.	GDD	CDD	HDD	Precip. (in)	Snowfall (in)
1	57	-14	31	16	8	-5	1.5	0	0	63.5	0.1	1.7
2	56	-16	29	15	19	8	13.5	0	0	51.5	0.13	6
3	58	-17	31	15	11	-9	1	0	0	64	T	T
4	55	-22	31	15	22	-8	7	0	0	58	0	0
5	56	-24	30	14	29	12	20.5	0	0	44.5	0.43	2.9
6*	50	-19	29	15	12	-19	-3.5	0	0	68.5	T	T
7	55	-20	28	14	-12	-19	-15.5	0	0	80.5	0	0
8	62	-19	28	12	2	-13	-5.5	0	0	70.5	T	T
9	53	-14	28	13	8	-4	2	0	0	63	0	0
10	56	-25	26	12	29	6	17.5	0	0	47.5	T	T
11	55	-22	27	13	37	29	33	0	0	32	0.72	0
12	56	-19	29	17	33	26	29.5	0	0	35.5	0	0
13	55	-17	33	16	39	26	32.5	0	0	32.5	0	0
14	57	-18	27	14	41	24	32.5	0	0	32.5	0	0
15	54	-21	25	11	33	10	21.5	0	0	43.5	T	T
16	53	-23	24	10	25	10	17.5	0	0	47.5	T	T
17	56	-20	26	11	33	7	20	0	0	45	T	0.2
18	54	-25	27	9	15	5	10	0	0	55	T	T
19	57	-22	26	6	19	6	12.5	0	0	52.5	0.1	1.5
20	53	-27	25	9	38	13	25.5	0	0	39.5	0	0
21	59	-22	25	11	34	-2	16	0	0	49	0.01	0.4
22	55	-22	29	15	6	-2	2	0	0	63	0	0
23	57	-25	31	15	13	-6	3.5	0	0	61.5	T	T
24	63	-23	28	13	3	-9	-3	0	0	68	0	0
25	62	-23	25	10	32	-1	15.5	0	0	49.5	0.01	0.7
26	59	-20	26	10	24	4	14	0	0	51	0.13	1.6
27	60	-16	29	11	30	-7	11.5	0	0	53.5	0.03	0.7
28	51	-22	30	12	0	-14	-7	0	0	72	0	0
29	55	-17	29	13	4	-14	-5	0	0	70	0	0
30	61	-22	29	14	21	-1	10	0	0	55	0	0
31	52	-16	28	12	30	11	20.5	0	0	44.5	0.01	T

*Tied Record Daily low temperature

Temperature

1981-2010 AVG. HI: 29.3(F)
 1981-2010 AVG. LOW: 12.7(F)
 1981-2010 AVG. TEMP.: 20.3(F)
 January 2014 AVG. HI: 20.6(F)
 January 2014 AVG. LO: 2.1(F)
 January 2014 AVG. TEMP.: 11.3(F)

Precipitation

January 2014 TOTAL: 1.67 in.
 January AVG.: 1.47 in.
 January 2014 SNOW: 15.7in.
 January SNOW AVG: 9.7 in.
 2014 liquid-eq. YEAR TO DATE: 1.67in.
 liquid-eq. YEAR TO DATE AVG.: 1.41 in.
 2013-14 Seasonal SNOW TO DATE: 28.1 in.
 Seasonal SNOW TO DATE AVG.: 20.9 in.

Degree Days

COOLING: 1/14: 0
 1/14-Now: 0
 HEATING: 1/14: 1664
 7/13-Now: 4539
 GROWING: 1/14: 0
 1/14-Now: 0

Discussion

January's mean temperature of 11.3°F was exactly nine degrees colder than the historical average of 20.3°F. The average monthly high and low were also about nine degrees below average. January saw temps well below average, with only nine highs and four lows at or above average. Twelve daily low temperatures were 20 or more degrees below average and, of those, seven were 30° or more below the average. Two days, both the 6th and the 7th, experienced the lowest low temperature of the month with -19°F, which tied the record low for January 6th. Of the below average highs, ten were 20° or more below and four were 30° or more below the average. The highest temperature was recorded on the 14th at 41°F. There were no GDDs or CDDs and 1644 HDDs for January. This month had 1.67 inches of liquid precipitation, which is .2" above historical average. January's snow was 6" above average at 15.7 inches, putting the seasonal total to 28.1 inches, which is about 34% above average.

Richard Medlicott, Adam Troxell, Melissa Randich, Stephanie Gizzi, Joe Rodey, Jodi Wright, Brigette Lim, Jason Madden, Ed Tierney, Morgan Nelson, Alex Dosen, Kevin McCoy - Cooperative Observers
 Richard Medlicott—Weather Director

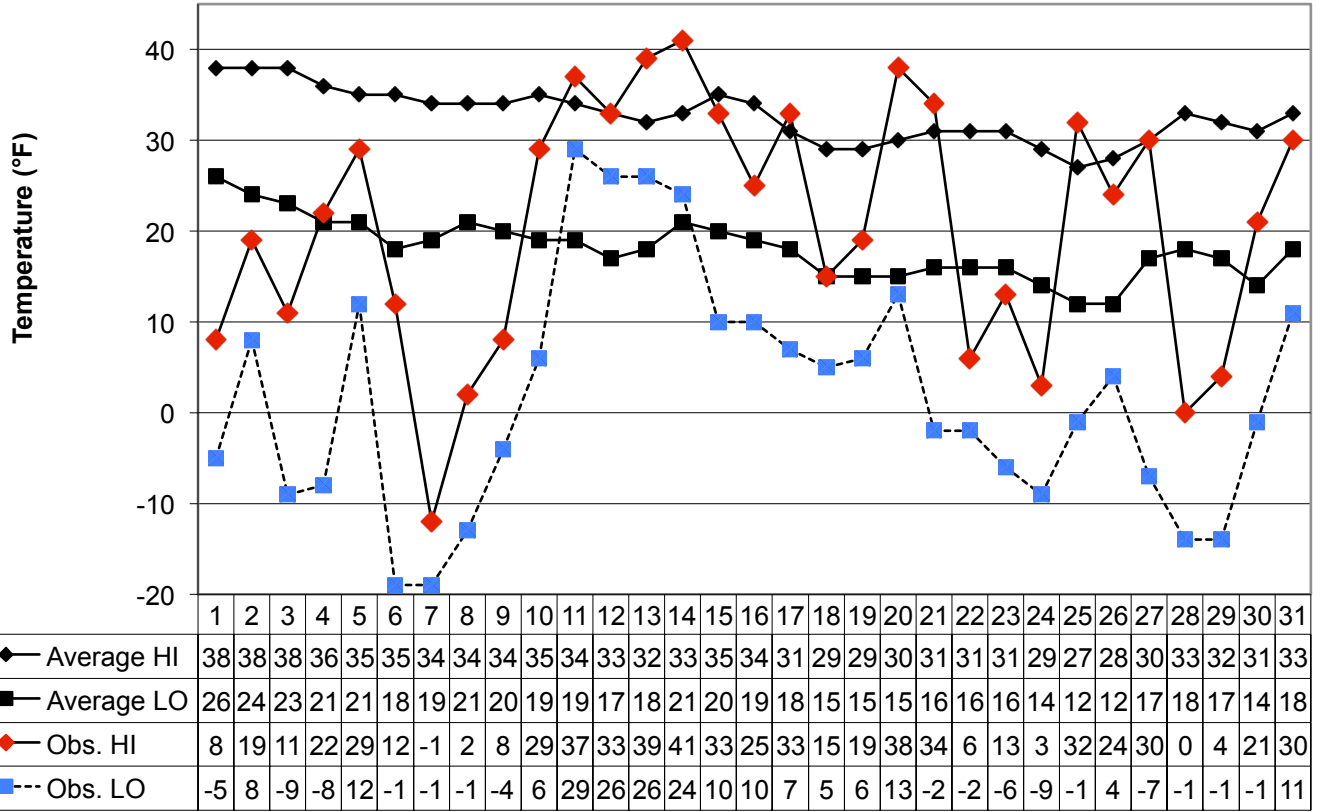
This summary was prepared by Richard Medlicott, 11 February 2014. Forecast information (updated once daily at approx. 7:30 am): (847) 848-4082.

Climate Website: <http://climate.niu.edu>

The Climate Summary is supported by the Department of Geography, the College of Liberal Arts and Sciences, and the Department of Operations.

January 2014 Daily Highs and Lows with 1981-2010 Average Highs and Lows

Prepared by Richard C. Medicott, NIU Weather Director



Day