

MONTHLY CLIMATE SUMMARY, DECEMBER 2015

NIU WEATHER SERVICE: DE KALB, IL.

Day	Record HI	Record LO	Average HI	Average LO	Obs. HI	Obs. LO	Obs. Avg.	GDD	HDD	CDD	Precip. (in)	Snowfall (in)
1	63	4	38	26	41	36	38.5	0	26.5	0	0.64	0
2	64	-5	38	24	42	30	36	0	29	0	0.12	1.3
3	66	-14	38	23	34	30	32	0	33	0	0.07	0.7
4	69	-4	36	21	33	29	31	0	34	0	0	0
5	64	-4	35	21	46	27	36.5	0	28.5	0	0	0
6	65	-7	35	18	38	28	33	0	32	0	0	0
7	66	-9	34	19	45	28	36.5	0	28.5	0	0	0
8	63	-8	34	21	39	29	34	0	31	0	0	0
9	59	-18	34	20	46	35	40.5	0	24.5	0	0	0
10	56	-18	35	19	50	35	42.5	0	22.5	0	0	0
11	60	-15	34	19	55	38	46.5	0	18.5	0	0	0
12	55	-10	33	17	50	37	43.5	0	21.5	0	T	0
13	60*	-19	32	18	60	49	54.5	0	10.5	4.5	0.08	0
14	60*	-12	33	21	60	52	56	0	9	6	1.52	0
15	59	-14	35	20	53	37	45	0	20	0	0.02	0
16	58	-17	34	19	41	37	39	0	26	0	0.09	0
17	57	-13	31	18	53	28	40.5	0	24.5	0	0	0
18	56	-12	29	15	32	22	27	0	38	0	0	0
19	55	-17	29	15	33	13	23	0	42	0	T	T
20	57	-19	30	15	32	13	22.5	0	42.5	0	0	0
21	57	-18	31	16	47	32	39.5	0	25.5	0	0.44	0
22	55	-12	31	16	51	34	42.5	0	22.5	0	0.09	0
23	58	-17	31	16	47	33	40	0	25	0	0	0
24	57*	-22	29	14	57	32	44.5	0	20.5	0	0.66	0
25	60	-13	27	12	38	31	34.5	0	30.5	0	0.01	0
26	56	-22	28	12	38	31	34.5	0	30.5	0	0	0
27	55	-20	30	17	39	33	36	0	29	0	0.1	0
28	64	-24	33	18	36	30	33	0	32	0	0.09	T
29	63	-12	32	17	36	29	32.5	0	32.5	0	1.52	1.9
30	59	-13	31	14	30	25	27.5	0	37.5	0	T	T
31	57	-14	33	18	27	21	24	0	41	0	0.01	0.2

Temperature

1981-2010 AVG. HI: 35.6(F)
 1981-2010 AVG. LOW: 17.9(F)
 1981-2010 AVG. TEMP.: 26.8(F)
 December 2015 AVG. HI: 42.9(F)
 December 2015 AVG. LO: 31.1(F)
 December 2015 AVG. TEMP.: 37.0(F)

Precipitation

December 2015 TOTAL: 5.46 in.
 December AVG.: 2.17 in.
 December 2015 SNOW: 4.1 in.
 December SNOW AVG: 10.0 in.
 2015 liquid-eq. YEAR TO DATE: 41.80 in.
 liquid-eq. YEAR TO DATE AVG.: 36.79 in.
 2015-16 Seasonal SNOW TO DATE: 11.6 in.
 Seasonal SNOW TO DATE AVG.: 11.2 in.

Degree Days

COOLING: 12/15: 0
 1/15-Now: 655
 HEATING: 12/15: 868.5
 7/15-Now: 2027
 GROWING: 12/15: 10.5
 1/15-Now: 2980.5

Discussion

December's average temperature was 37.0°F, which is 10.2 degrees warmer than the historical average. December's average high temperature was 7.3 degrees above the historical average. The average low temperature was 13.2 degrees above the historical average. December 14th and 24th recorded record high temperatures and December 13th tied the record high temperature. There were 4 days with below average high temperatures and 2 days with below average low temperatures. December 2015 was the warmest December on record beating the 1982 record by 1.1 degrees.

Decembers' precipitation total was 5.46 in. which is 3.29 in. above the average precipitation for December. December 14th and 29th accounted for over 55% of the total precipitation for the month. December 2015 was the second wettest December on record behind the December 2008 record of 5.85 inches. The average snow total for December is 10 inches, but in December 2015, there was only 4.1 in. of snow recorded. The 2015-16 snow to date is at 11.6 in, which is 0.4 inches above the seasonal average for snowfall. The 2015 year-to-date liquid equivalent is now 41.80 inches, which is 5.01 inches above the average year-to-date liquid equivalent.

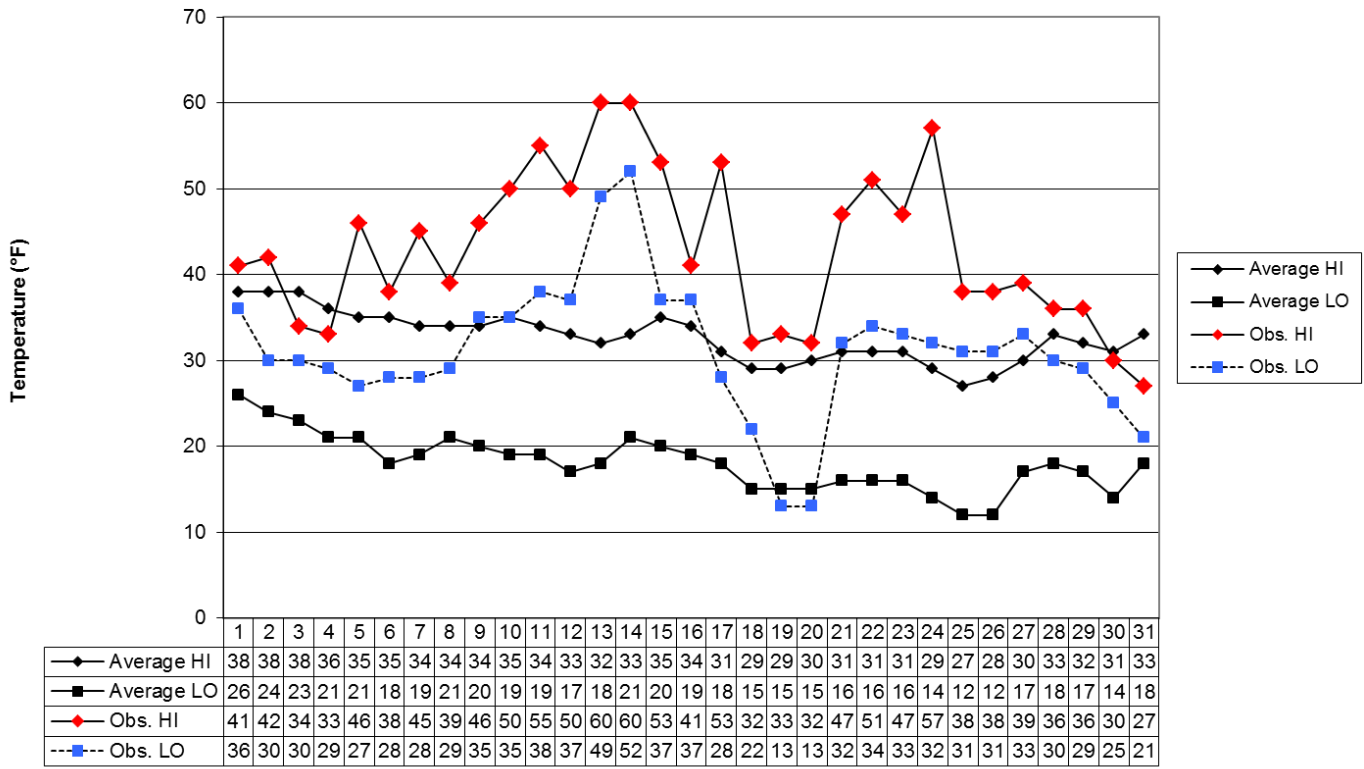
David Pridmore, Emma Falk, Dominique Watson, Marc Quatrini, Dan O'Sullivan, Michael Keierleber, Stephen Strader—Cooperative Observers
 Jim Kolar—Weather Director

This summary was prepared by Jim Kolar, 12 January 2016. Forecast information (updated once daily at approx. 7:30 am): (630) 999-1327.

Climate Website: <http://climate.niu.edu>

The Climate Summary is supported by the Department of Geography, the College of Liberal Arts and Sciences, and the Department of Operations.

December 2015 Daily Highs and Lows with 1981-2010 Average Highs and Lows
 Prepared by Jim Kolar, NIU Weather Director



Day