

MONTHLY CLIMATE SUMMARY, FEBRUARY 2015

NIU WEATHER SERVICE: DE KALB, IL.

Day	Record HI	Record LO	Average HI	Average LO	Obs. HI	Obs. LO	Obs. Avg.	GDD	CDD	HDD	Precip. (in)	Snowfall (in)
1	65	-16	32	15	34	22	28	0	0	37	0.61	7.9
2	47	-17	31	16	29	2	15.5	0	0	49.5	0.24	8
3	49	-23	30	16	12	0	6	0	0	59	0	0
4	54	-22	29	13	24	10	17	0	0	48	0.01	0.5
5	51	-17	27	11	18	-7	5.5	0	0	59.5	T	0.2
6	53	-15	28	14	16	-7	4.5	0	0	60.5	0	0
7	46	-16	30	14	28	15	21.5	0	0	43.5	0	0
8	53	-12	30	14	39	22	30.5	0	0	34.5	T	0
9	59	-11	31	15	36	19	27.5	0	0	37.5	0	0
10	55	-14	31	15	25	12	18.5	0	0	46.5	T	T
11	58	-13	30	15	31	13	22	0	0	43	0	0
12	68	-13	31	13	33	6	19.5	0	0	45.5	T	T
13	55	-7	31	14	14	-1	6.5	0	0	58.5	T	T
14	56	-6	32	16	26	2	14	0	0	51	0	0
15	60	-4	34	17	15	-4*	5.5	0	0	59.5	T	T
16	55	-7	32	17	14	-5	4.5	0	0	60.5	0	0
17	56	-7	33	17	16	5	10.5	0	0	54.5	T	0.1
18	55	-4	34	19	18	1	9.5	0	0	55.5	0	0
19	56	-12	37	19	6	-12*	-3	0	0	68	T	T
20	57	-11	38	23	4	-11*	-3.5	0	0	68.5	0	0
21	57	-3	39	23	18	-3*	7.5	0	0	57.5	T	0.2
22	61	-2	38	23	28	12	20	0	0	45	T	T
23	58	-9	37	22	28	-9*	9.5	0	0	55.5	0	0
24	62	-11	37	21	10	-8	1	0	0	64	0	0
25	62	-11	36	20	30	6	18	0	0	47	0	0
26	69	-4	37	20	21	10	15.5	0	0	49.5	0.16	2.6
27	68	-9	38	21	17	-9*	4	0	0	61	T	T
28	63	-9	37	21	12	-9*	1.5	0	0	63.5	0	0

*Record setting temperatures

Temperature

1981-2010 AVG. HI: 33 (F)
 1981-2010 AVG. LOW: 17 (F)
 1981-2010 AVG. TEMP.: 25 (F)
 February 2015 AVG. HI: 21.5 (F)
 February 2015 AVG. LO: 2.6 (F)
 February 2015 AVG. TEMP.: 12.0 (F)

Precipitation

February 2015 TOTAL: 1.02 in.
 February AVG.: 1.55 in.
 February 2015 SNOW: 19.5 in.
 February SNOW AVG: 7.3 in.
 2015 liquid-eq. YEAR TO DATE: 2.11 in.
 liquid-eq. YEAR TO DATE AVG.: 3.02 in.
 2014-15 Seasonal SNOW TO DATE: 32.1 in.
 Seasonal SNOW TO DATE AVG.: 27.2 in.

Degree Days

COOLING: 2/15: 0
 2/15-Now: 0
 HEATING: 2/15: 1483
 7/14-Now: 5618
 GROWING: 2/15: 0
 2/15-Now: 0

Discussion

February's average temperature of 12°F is 13 degrees below the historical average temperature. This month's average temperature ties February 2014 as the second coldest average temperature on record for DeKalb. The average high of 21.5 degrees is over eleven degrees below the historical average and sets the record for the second coldest average high temperature for February. The average low of 2.6 is over fourteen degrees below the historical average and sets the record for the coldest average low temperature for February. There were seven days that broke records for low temperatures.

February had 1.02 inches of liquid precipitation, which is just over a half an inch below February's average. The month's snow total was 19.5 inches, which is over twelve inches over the average and makes 2015 the 5th snowiest February for DeKalb. Eighty-five percent of the total snowfall fell within the first five days of the month. The 2014-15 seasonal snow to date total now stands at 32.1 inches, which is almost five inches over the seasonal snow to date average.

Conner Aigner, Emma Falk, Dustin Harter, Jim Kolar, Joe Rodey, Dominique Watson- Cooperative Observers

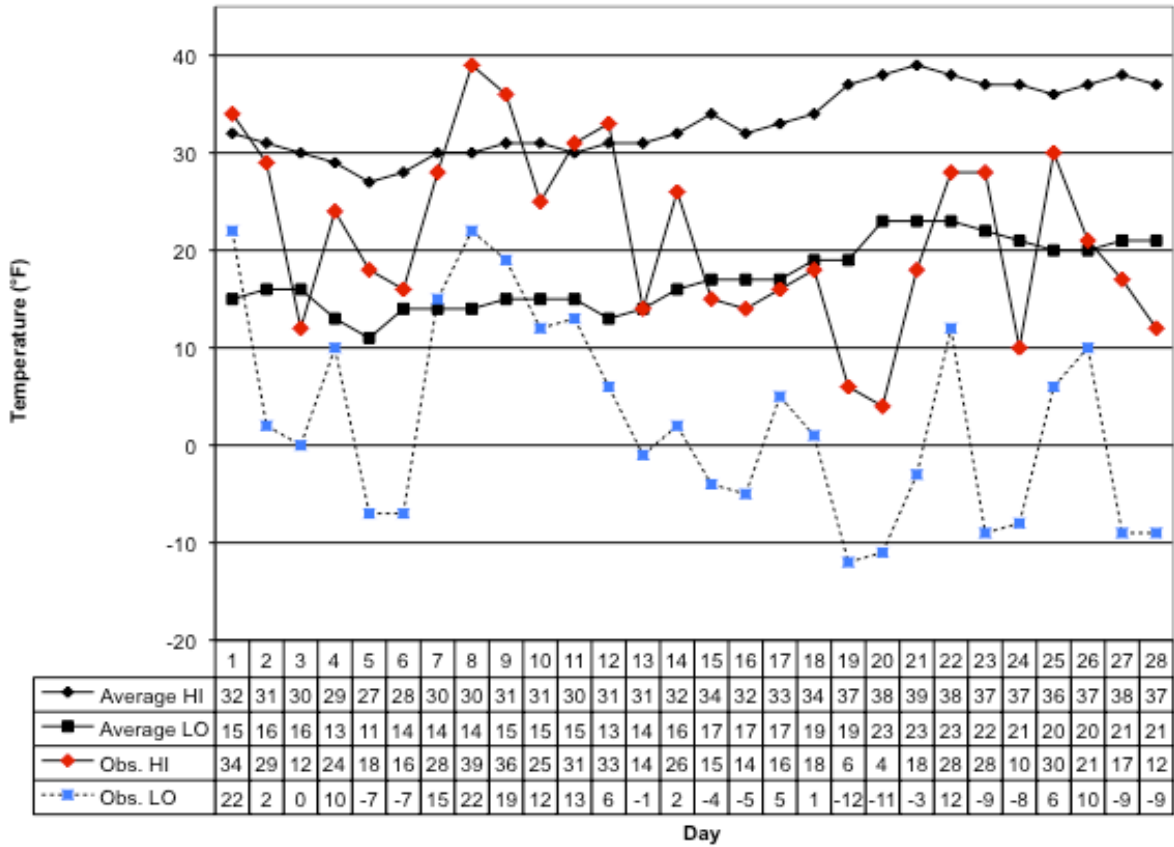
Jodi Wright—Weather Director

This summary was prepared by Jodi Wright, 6 March 2015. Forecast information (updated once daily at approx. 7:30 am): (815) 762-3230.

Climate Website: <http://climate.niu.edu>

The Climate Summary is supported by the Department of Geography, the College of Liberal Arts and Sciences, and the Department of Operations.

February 2015 Daily Highs and Lows with 1981-2010 Average Highs and Lows
 Prepared by Jodi Wright, NIU Weather Director



Day