

MONTHLY CLIMATE SUMMARY, June 2015

NIU WEATHER SERVICE: DE KALB, IL.

Day	Record HI	Record LO	Average HI	Average LO	Obs. HI	Obs. LO	Obs. Avg.	GDD	CDD	HDD	Precip. (in)	Snowfall (in)
1	106	34	77	55	60	43	51.5	1.5	0	13.5	T	0.0
2	97	38	78	56	64	44	54	4	0	11	0	0.0
3	102	34	74	54	73	49	61	11	0	4	0	0.0
4	97	34	72	52	77	56	70.5	20.5	5.5	0	0	0.0
5	98	33	74	53	83	63	73	23	8	0	0	0.0
6	98	40	76	56	74	52	63	13	0	2	0	0.0
7	97	38	80	58	75	55	65	15	0	0	0.02	0.0
8	98	35	80	59	82	64	73	23	8	0	0.37	0.0
9	95	35	79	58	83	59	71	21	6	0	0	0.0
10	103	36	78	57	88	61	74.5	24.5	9.5	0	0	0.0
11	102	36	80	57	91	69	80	30	15	0	0	0.0
12	95	38	81	60	77	60	68.5	18.5	3.5	0	1.02	0.0
13	95	42	81	60	65	59	62	12	0	3	0.19	0.0
14	96	39	82	61	81	59	70	20	5	0	1.14	0.0
15	96	39	81	60	83	69	76	26	11	0	0.28	0.0
16	95	37	80	59	80	64	72	22	7	0	2.15	0.0
17	99	37	81	58	77	59	68	18	3	0	0.01	0.0
18	96	44	82	61	70	55	62.5	12.5	0	2.5	1.42	0.0
19	99	42	83	60	78	53	65.5	15.5	0.5	0	T	0.0
20	99	37	82	61	74	55	64.5	14.5	0	0.5	0	0.0
21	100	38	84	63	77	57	67	17	2	0	0.45	0.0
22	99	40	83	62	84	61	72.5	22.5	7.5	0	0	0.0
23	103	39	83	61	81	63	72	22	7	0	0.27	0.0
24	102	40	83	61	78	61	69.5	19.5	4.5	0	0	0.0
25	99	43	84	63	76	63	69.5	19.5	4.5	0	0.59	0.0
26	101	45	85	62	75	59	67	17	2	0	T	0.0
27	100	40	83	62	67	58	62.5	12.5	0	2.5	0.08	0.0
28	101	41	83	62	75	56	65.5	15.5	0.5	0	0	0.0
29	101	40	82	61	76	62	69	19	4	0	0.17	0.0
30	102	39	81	60	77	60	68.5	18.5	3.5	0	0.04	0.0

Temperature

1981-2010 AVG. HI: 80.3 (F)
 1981-2010 AVG. LOW: 59 (F)
 1981-2010 AVG. TEMP.: 69.7 (F)
 June 2015 AVG. HI: 76.7 (F)
 June 2015 AVG. LO: 58.3 (F)
 June 2015 AVG. TEMP.: 67.2 (F)

Precipitation

June 2015 TOTAL: 8.20 in.
 June AVG.: 4.18 in.
 June 2015 SNOW: 0
 June SNOW AVG: 0
 2015 liquid-eq. YEAR TO DATE: 20.48 in.
 liquid-eq. YEAR TO DATE AVG.: 17.27 in.
 2014-15 Seasonal SNOW TO DATE: 36 in
 Seasonal SNOW TO DATE AVG.: 35.8 in

Degree Days

COOLING: 6/15: 117.5
 1/15-Now: 178
 HEATING: 6/15: 39
 7/14-Now: 7287.5
 GROWING: 6/15: 528.5
 1/15-Now: 981

Discussion

Overall, June 2015 had below average temperatures for most of the month. The average temperature was 67.2 degrees which was below the historical average by 2.5 degrees. The average high temperature was 76.7 degrees which was 3.6 degrees below the historical average. The average low temperature was 58.3 degrees and was 0.7 degrees below the historical average. June 11th was the only day that exceeded 90 degrees.

June 2015 ranked 6th for the highest amount of precipitation in the month of June since 1895. This marks the second year in a row that we have had top six precipitation amounts for the month of June. There were 8.20 inches of precipitation which is 4.02 inches above the historical average for the month of June. Year to date precipitation stands at 20.48 inches which is 3.21 inches above the historical average. June 12th through the 18th accounted for 75.7% of the monthly precipitation. Also, June 16th had the highest single day precipitation amount at 2.15 inches which was just over a fourth of the monthly precipitation.

David Pridmore, Jodi Wright, Joe Rodey —Cooperative Observers;

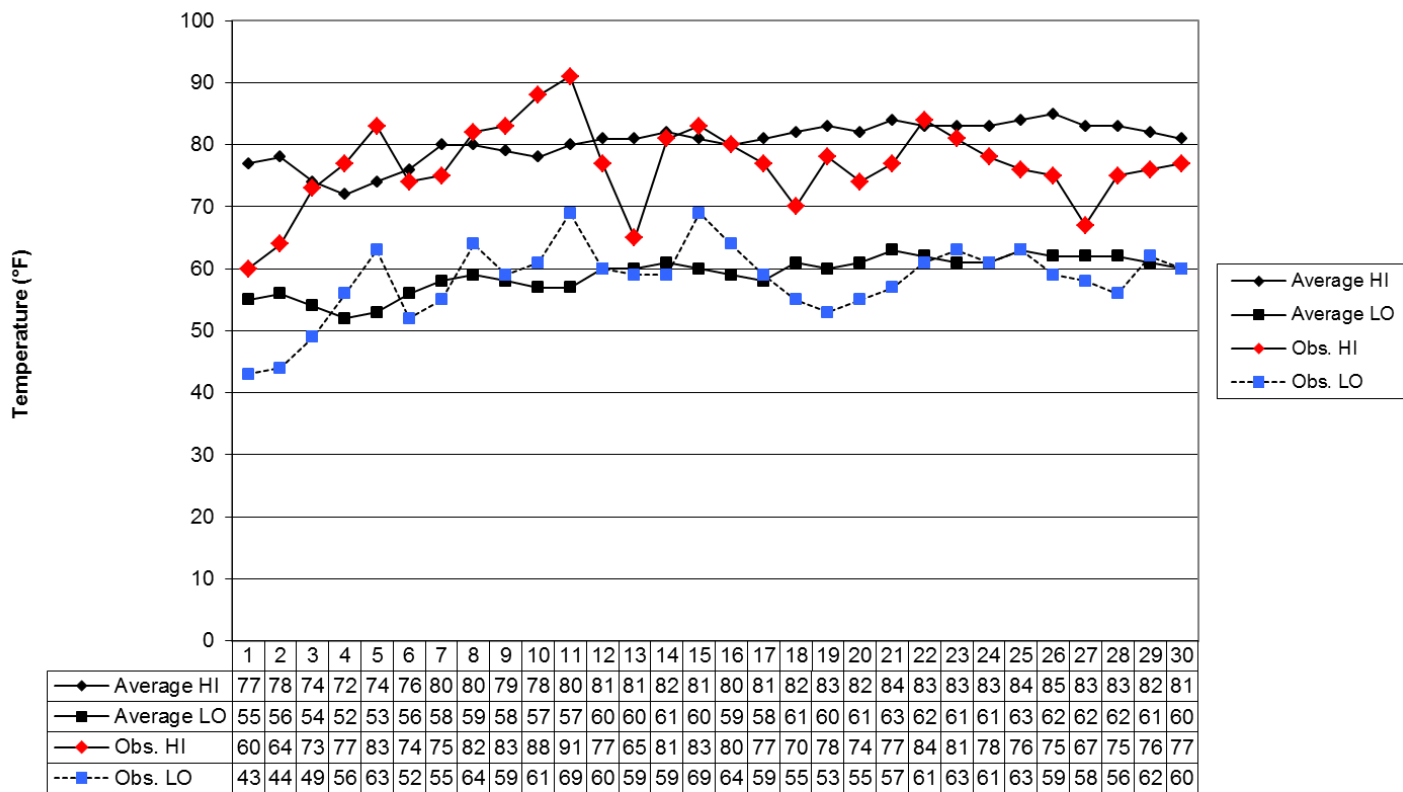
Jim Kolar—Weather Director

This summary was prepared by Jim Kolar, 6 July 2015. Forecast information (updated once daily at approx. 7:30 am): (630) 999-1327.

Climate Website: <http://climate.niu.edu>

The Climate Summary is supported by the Department of Geography, the College of Liberal Arts and Sciences, and the Department of Operations.

June 2015 Daily Highs and Lows with 1981-2010 Average Highs and Lows
 Prepared by Jim Kolar, NIU Weather Director



Day