

MONTHLY CLIMATE SUMMARY, MARCH 2015

NIU WEATHER SERVICE: DE KALB, IL.

Day	Record HI	Record LO	Average HI	Average LO	Obs. HI	Obs. LO	Obs. Avg.	GDD	CDD	HDD	Precip. (in)	Snowfall (in)
1	65	-6	38.2	22.1	17	-6*	5.5	0	0	59.5	T	T
2	66	0	40.8	22.3	25	7	16	0	0	49	0	0
3	72	-7	37.9	21.2	28	9	18.5	0	0	46.5	0.26	1.0
4	70	-13	37.0	21.3	32	9	20.5	0	0	44.5	0	0
5	71	-9	40.8	23.1	19	-1	9	0	0	56	0	0
6	69	-2	40.7	24.4	14	-2*	6	0	0	59	0	0
7	70	0	40.3	23.3	30	0*	15	0	0	50	0	0
8	77	-4	40.1	22.5	43	28	35.5	0	0	29.5	0	0
9	73	-3	40.7	22.9	37	24	30.5	0	0	34.5	0	0
10	66	-2	40.4	21.9	48	25	36.5	0	0	28.5	0	0
11	69	-2	41.9	23.9	41	32	36.5	0	0	28.5	T	0
12	72	6	43.5	23.8	52	32	42	0	0	23	T	0
13	77	7	45.1	26.9	54	34	44	0	0	21	0	0
14	72	6	46.1	27.7	63	36	49.5	0	0	15.5	0	0
15	77	7	46.9	27.3	59	32	45.5	0	0	19.5	0	0
16	79	10	45.4	26.5	61	33	47	0	0	18	0	0
17	80	10	45.3	27.8	72	36	54	4	0	11	0	0
18	80	9	44.7	27.2	44	28	36	0	0	29	0	0
19	79	14	44.4	27.7	46	28	37	0	0	28	0	0
20	76	10	45.8	27.1	47	35	41	0	0	24	0	0
21	82	10	46.2	27.7	54	35	44.5	0	0	20.5	0	0
22	83	10	45.9	27.7	54	29	41.5	0	0	23.5	0	0
23	80	12	49.6	28.8	39	26	32.5	0	0	32.5	0.1	1.5
24	74	3	51.2	30.5	30	22	26	0	0	39	0.15	1.4
25	71	10	51.6	32.0	38	22	30	0	0	35	0.01	0
26	77	13	50.6	32.6	41	27	34	0	0	31	T	0
27	77	9	52.9	32.5	40	20	30	0	0	35	0	0
28	77	8	53.6	33.5	40	17	28.5	0	0	36.5	0	0
29	76	12	52.9	33.3	40	21	30.5	0	0	34.5	0	0
30	84	8	51.5	33.8	47	28	37.5	0	0	27.5	0.03	0
31	81	10	55.4	34.5	64	33	48.5	0	0	16.5	T	0

***Record breaking temperature**

Temperature

1981-2010 AVG. HI: 45.4 (F)
 1981-2010 AVG. LOW: 27.0 (F)
 1981-2010 AVG. TEMP.: 36.2 (F)
 March 2015 AVG. HI: 42.6 (F)
 March 2015 AVG. LO: 22.6 (F)
 March 2015 AVG. TEMP.: 32.6 (F)

Precipitation

March 2015 TOTAL: 0.55 in.
 March AVG.: 2.27 in.
 March 2015 SNOW: 3.9 in.
 March SNOW AVG: 4.2 in.
 2015 liquid-eq. YEAR TO DATE: 2.66 in.
 liquid-eq. YEAR TO DATE AVG.: 5.29 in.
 2014-15 Seasonal SNOW TO DATE: 36.0 in.
 Seasonal SNOW TO DATE AVG.: 33.9 in.

Degree Days

COOLING: 3/15: 0
 3/15-Now: 0
 HEATING: 3/15: 1006
 7/14-Now: 6624
 GROWING: 3/15: 4
 3/15-Now: 4

Discussion

March's average temperature of 32.6°F was almost four degrees below the historical average temperature. The average high of 42.6 degrees was almost three degrees below the historical average. Also, the average low of 22.6 was 4.4 degrees below the historical average. March had its coldest start to the month on record with a high of 17 degrees on the first day and a record breaking low temperature of -6 degrees. There were three days that broke records for low temperatures.

March had 0.55 inches of liquid precipitation, which is 1.72 inches below the average precipitation for the month. March 2015 is the second driest March on record. The year to date liquid-equivalent is 2.66, which is over 50 percent less than the historical average for liquid-equivalent year to date. The month's snow total was 3.9 inches, which is only 0.3 in below the historical average. The 2014-15 seasonal snow to date total now stands at 36 inches, which just over two inches above the seasonal snow to date average.

Conner Aigner, Emma Falk, Dustin Harter, Jim Kolar, Joe Rodey, Dominique Watson- Cooperative Observers

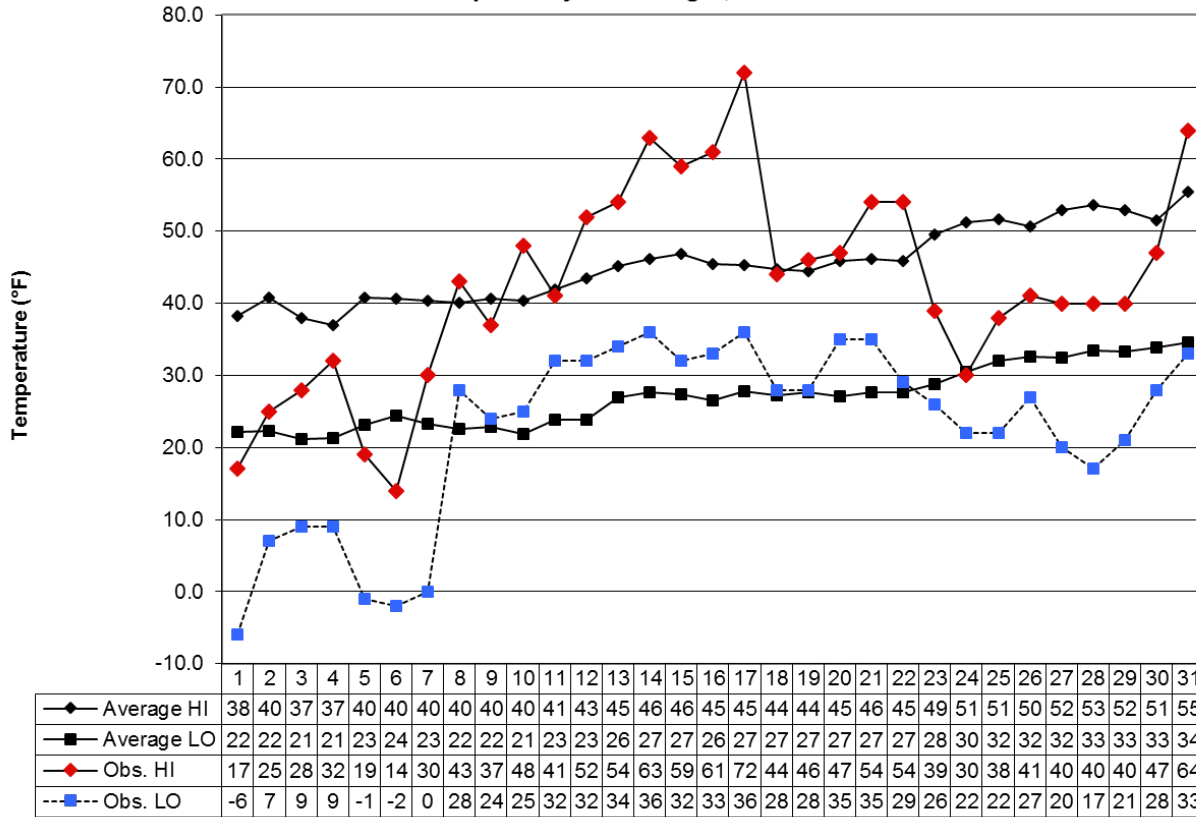
Jodi Wright—Weather Director

This summary was prepared by Jodi Wright, 14 April 2015. Forecast information (updated once daily at approx. 7:30 am): (815) 762-3230.

Climate Website: <http://climate.niu.edu>

The Climate Summary is supported by the Department of Geography, the College of Liberal Arts and Sciences, and the Department of Operations.

March 2015 Daily Highs and Lows with 1981-2010 Average Highs and Lows
 Prepared by Jodi Wright, NIU Weather Director



Day