

MONTHLY CLIMATE SUMMARY, FEBRUARY 2017

NIU WEATHER SERVICE: DE KALB, IL.

Day	Record HI	Record LO	Average HI	Average LO	Obs. HI	Obs. LO	Obs. AVG	GDD	HDD	CDD	Precip. (in)	Snowfall (in)
1	65	-18	32	15	39	29	34	0	0	31	0	0
2	47	-20	31	16	35	12	23.5	0	0	41.5	T	0
3	52	-23	30	16	23	12	17.5	0	0	47.5	0	0
4	54	-18	29	13	27	12	19.5	0	0	45.5	0	0
5	58	-20	27	11	31	12	21.5	0	0	43.5	T	T
6	55	-15	28	14	37	24	30.5	0	0	34.5	0	0
7	52	-16	30	14	*52	25	38.5	0	0	26.5	0.51	0
8	56	-16	30	14	46	26	36	0	0	29	0.05	T
9	59	-26	31	15	27	11	19	0	0	46	T	T
10	55	-21	31	15	23	11	17	0	0	48	0	0
11	60	-15	30	15	41	20	30.5	0	0	34.5	0	0
12	55	-21	31	13	49	32	40.5	0	0	24.5	T	0
13	59	-26	31	14	44	24	34	0	0	31	0	0
14	60	-12	32	16	44	23	33.5	0	0	31.5	0	0
15	64	-17	34	17	48	24	36	0	0	29	0	0
16	56	-14	32	17	36	23	29.5	0	0	35.5	0	0
17	57	-16	33	17	41	29	35	0	0	30	0	0
18	56	-21	34	19	*64	30	47	0	0	18	0	0
19	66	-17	37	19	*66	33	49.5	0	0	15.5	0	0
20	62	-25	38	23	*66	35	50.5	0.5	0	14.5	0	0
21	65	-11	39	23	*68	44	56	6	0	9	0.06	0
22	64	-13	38	23	*65	47	56	6	0	9	0.01	0
23	60	-12	37	22	*67	41	54	4	0	11	0	0
24	62	-11	37	21	49	35	42	0	0	23	0.19	0
25	66	-12	36	20	38	19	28.5	0	0	36.5	0	0
26	69	-11	37	20	26	18	22	0	0	43	T	T
27	68	-6	38	21	47	26	36.5	0	0	28.5	T	0
28	63	-5	37	21	53	28	40.5	0	0	24.5	0	0

** indicates a broken or tied record*

Temperature

1981-2010 AVG HI: 33.0 °F
 1981-2010 AVG LOW: 17.0°F
 1981-2010 AVG TEMP.: 25.0 °F
 February 2017 AVG HI: 44.7 °F
 February 2017 AVG LOW: 25.2 °F
 February 2017 AVG TEMP: 35.0 °F

Precipitation

February 2017 TOTAL: 0.82 in.
 February AVG: 1.55 in.
 February 2017 SNOW: Trace
 February SNOW AVG.: 7.3 in.
 2017 Liquid-Eq. YEAR TO DATE: 3.04 in.
 Liquid-Eq. YEAR TO DATE AVG: 3.02 in.
 2016-2017 Seasonal SNOW TO DATE: 17.3 in.
 Seasonal SNOW TO DATE AVG: 27.2 in.

Degree Days

COOLING: 2/17: 0
 2/17-Now: 0
 HEATING: 2/17: 841.5
 7/16-Now: 4303.0
 GROWING: 2/17: 16.5
 2/17-Now: 16.5

Discussion

February's average temperature was 35.0 degrees, which is 10 degrees warmer than the historical average temperature and the second-warmest since 1893. February's average high of 44.7 degrees was 11.7 degrees warmer than the historical average high, with the average low temperature being much warmer than the historical average by 8.2 degrees. February had 23 days with above average highs and 21 days with above average lows. February had its highest temperature on the 21st at 68 degrees. This was 29 degrees above the average for the day and 3 degrees above the previous record high. February saw seven record-breaking high temperatures on the 7th and from the 18th to the 23rd. The last time we saw a record-breaking period of this length was in February 1930.

February's precipitation total for 2017 was 0.82 in., which was 0.73 in. below the average. The 2017 liquid-equivalent year to date now is 3.04 in, which is 0.02 inches above average. Sixty-six percent of the precipitation fell within a two-day period in the first half of the month. Sixty-two percent of the total precipitation fell on the 7th at 0.51 inches. The total snowfall for February was a trace, which is 7.3 in. below average.

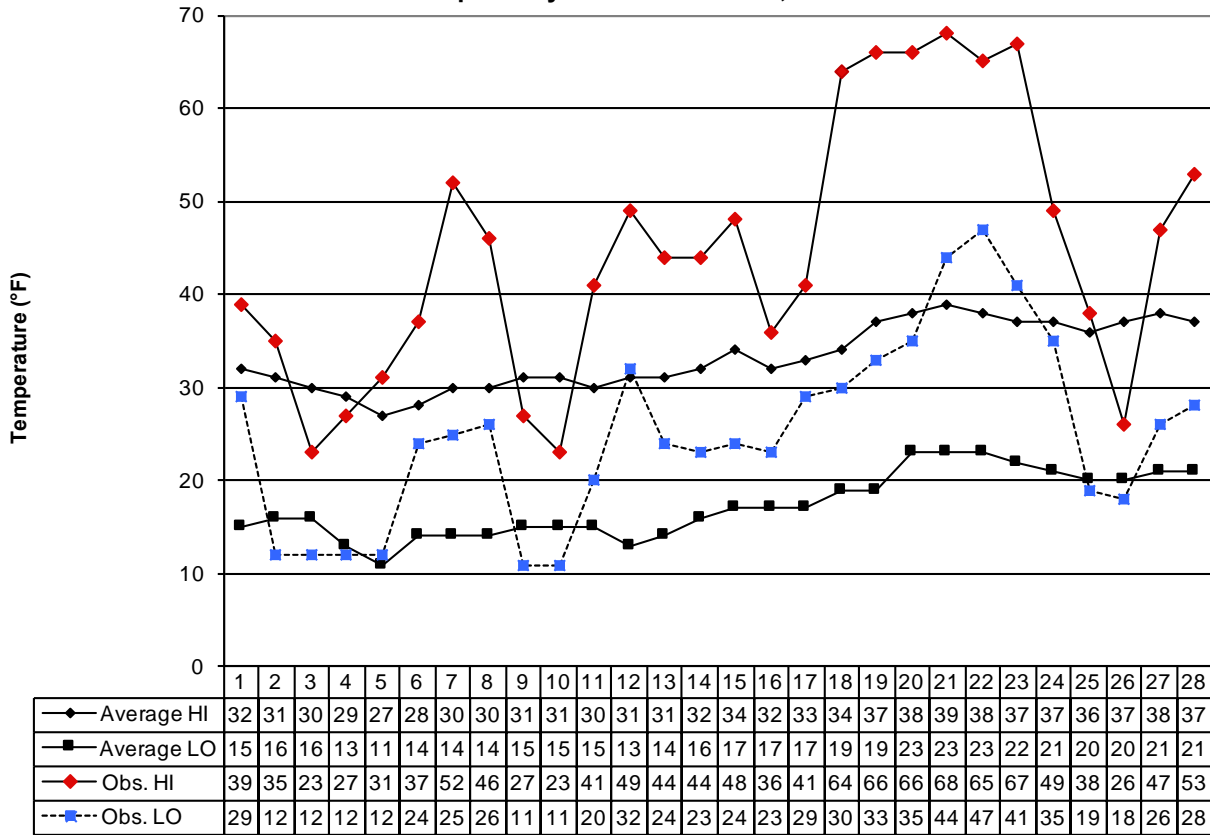
The 2016-2017 winter saw an average high temperature of 34.7 degrees from December 1st to February 28th. This winter's average temperature was 27.4 degrees, which tied for the 12th warmest winter on record (winter of 1982/83). Also, this season has seen a total of eight record high temperatures either tied or broken, with one in January and seven in February. Additionally, we have only measured a record-breaking 0.3 inches of snowfall in the last 72 days of the season.

Sarah Black, Emma Falk, Lauren Haas, Matthew Mendez, Yesenia Nevarez, Andrew Pearson, Michael Pejovich — Cooperative Observers;
 Daniel O'Sullivan Jr — Weather Director

This summary was prepared by Daniel O'Sullivan Jr, 2 March 2017. Forecast information (updated once daily at approx. 7:30 am): (815) 753-1623.
 Climate Website: <http://climate.niu.edu>

The Climate Summary is supported by the Department of Geography, the College of Liberal Arts and Sciences, and the Department of Operations.

February 2017 Daily Highs and Lows with 1981-2010 Average Highs and Lows
 Prepared by Dan O'Sullivan Jr, NIU Weather Director



Day