

**MONTHLY CLIMATE SUMMARY, JUNE 2020**  
**NIU WEATHER SERVICE: DE KALB, IL.**

Day	Record HI	Record LO	Average HI	Average LO	Obs. HI	Obs. LO	Obs. Avg.	GDD	CDD	HDD	Precip. (in)	Snowfall (in)
1	106	34	77	55	72	50	61	0	4	61	0	0
2	97	38	78	56	77	57	67	2	0	17	0.02	0
3	102	34	74	54	93	66	79.5	14.5	0	29.5	0.1	0
4	97	34	72	52	82	66	74	9	0	24	0.07	0
5	98	33	74	53	88	68	78	13	0	28	0	0
6	98	40	76	56	87	66	76.5	11.5	0	26.5	0	0
7	97	38	80	58	83	58	70.5	5.5	0	20.5	0	0
8	98	35	80	59	83	59	71	6	0	21	0	0
9	95	35	79	58	90	67	78.5	13.5	0	28.5	0	0
10	103	36	78	57	85	67	76	11	0	26	0.62	0
11	102	36	80	57	82	56	69	4	0	19	0.07	0
12	95	38	81	60	80	56	68	3	0	18	0	0
13	95	42	81	60	83	53	68	3	0	18	0	0
14	96	39	82	61	68	53	60.5	0	4.5	10.5	0	0
15	96	39	81	60	71	52	61.5	0	3.5	11.5	0	0
16	95	37	80	59	77	57	67	2	0	17	0	0
17	99	37	81	58	84	61	72.5	7.5	0	22.5	0	0
18	96	44	82	61	86	63	74.5	9.5	0	24.5	0	0
19	99	42	83	60	88	66	77	12	0	27	0	0
20	99	37	82	61	90	69	79.5	14.5	0	29.5	0	0
21	100	38	84	63	84	65	74.5	9.5	0	24.5	0.04	0
22	99	40	83	62	87	66	76.5	11.5	0	26.5	0.07	0
23	103	39	83	61	79	58	68.5	3.5	0	18.5	0.17	0
4	102	40	83	61	75	57	66	1	0	16	0	0
25	99	43	84	63	78	58	68	3	0	18	0	0
26	101	45	85	62	84	64	74	9	0	24	0.21	0
27	100	40	83	62	79	65	72	7	0	22	0.07	0
28	101	41	83	62	86	68	77	12	0	27	0	0
29	101	40	82	61	86	69	77.5	12.5	0	27.5	0	0
30	102	39	81	60	90	70	80	15	0	30	0	0

**Temperature**

1981-2010 AVG. HI: 80.3 (F)  
 1981-2010 AVG. LOW: 59 (F)  
 1981-2010 AVG. TEMP.: 69.7 (F)  
 June 2020 AVG. HI: 82.6 (F)  
 June 2020 AVG. LO: 61.7 (F)  
 June 2020 AVG. TEMP.: 72.7 (F)

**Precipitation**

June 2020 TOTAL: 1.44 in.  
 June AVG.: 4.18 in.  
 June 2020 SNOW: 0  
 June SNOW AVG: 0  
 2020 liquid-eq. YEAR TO DATE: 18.6 in.  
 liquid-eq. YEAR TO DATE AVG.: 17.27 in.  
 2019-20 Seasonal SNOW TO DATE: 40 in  
 Seasonal SNOW TO DATE AVG.: 35.8 in

**Degree Days**

COOLING: 6/20: 225.5  
 2/20-Now: 275.5  
 HEATING: 6/20: 12  
 7/19-Now: 6203.5  
 GROWING: 6/20: 713.5  
 2/20-Now: 1025.5

**Discussion**

As for temperature, June of 2020 did not see any record-breaking numbers, although it was a rather warm month. The June average temperature of 72.7°F was 3°F above the historical average. The average high temperature was 2.3°F above the historical high average temperature of 80.3 degrees. The average low temperature was 2.7°F above the historical low average of 59 degrees. June had 19 days with at or above average highs and 20 days with at or above average lows.

June 2020 was the 6<sup>th</sup> driest June we've had since records began in 1966 with a total of 1.44 inches of precipitation, quite a contrast from the wet start to the year we had. Total precipitation for the month was 1.44 inches, which is 2.74 inches below the historical average of 4.18 inches for June. Year to date precipitation stands at 18.6 inches, which is 1.33 inches above average. Precipitation was relatively evenly distributed as sixty one percent of precipitation fell in the first half of the month. The highest amount of precipitation fell on the 10<sup>th</sup>, with 0.62 inches of precipitation on that day. There was no snowfall in June, which matched the average.

There were 12 heating degree days making the total since last July 6203.5 days, 1044.5 HDDs less than at this point last year. There were 713.5 growing degree days for the month, making the yearly total 1025.5. We had 225.5 cooling degree days, making the yearly total 275.5.

Dylan McCorkhill, Kyle Pittman, Nick Rodeo— Cooperative Observers;

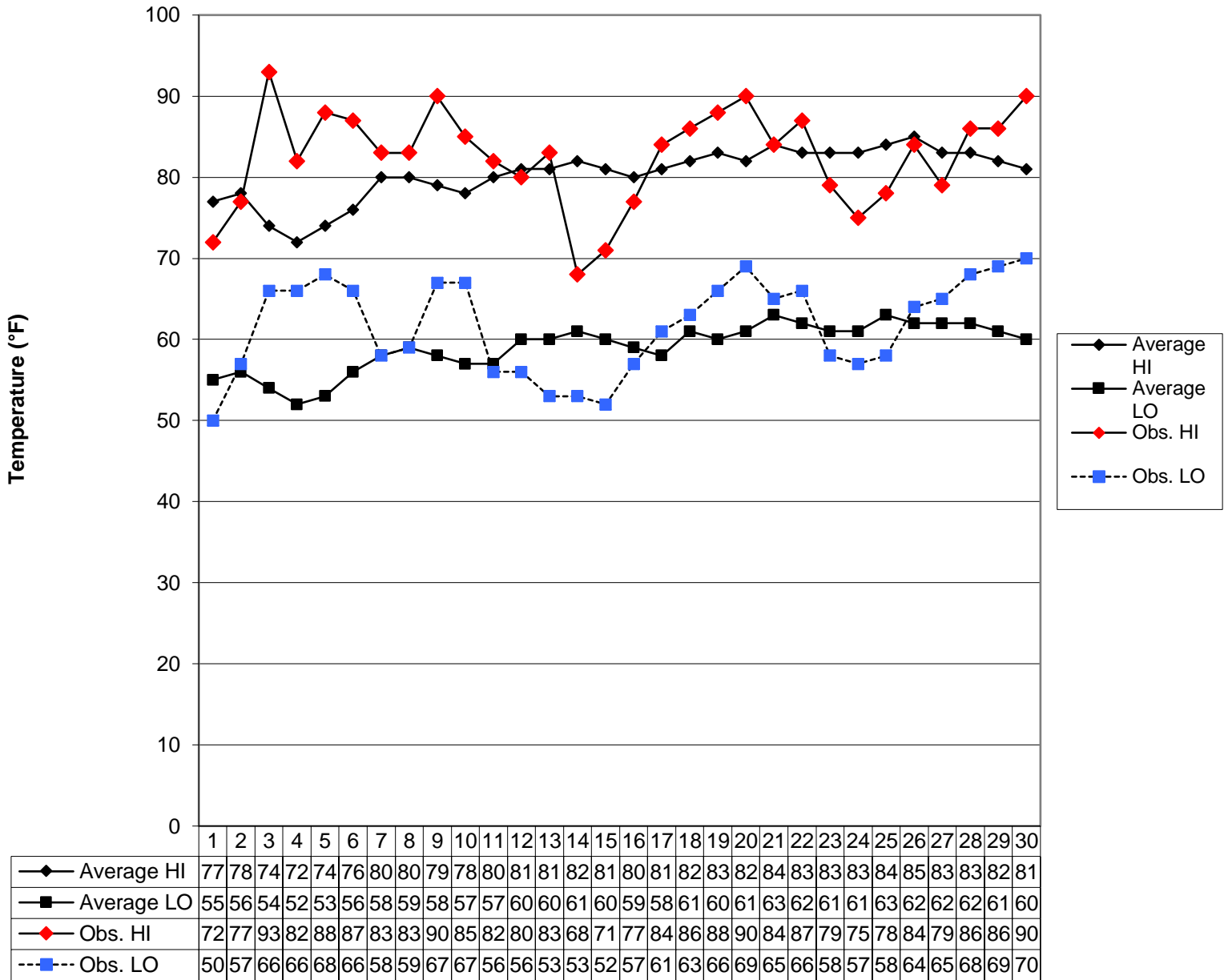
Luke Henderson —Weather Director

This summary was prepared by Luke Henderson, 20 July 2020. Forecast information (updated once daily at approx. 7:30 am): (815) 753-1623.

Climate Website: <http://climate.niu.edu>

**The Climate Summary is supported by the Department of Geography, the College of Liberal Arts and Sciences, and the Department of Operations.**

**June 2020 Daily Highs and Lows with 1981-2010 Average Highs and Lows  
Prepared by Luke Henderson, NIU Weather Director**



Day